

# Weeely



## Counties roll out vaccines for children

Page 7



# TAKING CENTER STAGE

*HOW LOCAL YOUTH IMAGINED AND BROUGHT TO LIFE EAST PALO ALTO'S NEW STATE-OF-THE-ART CREATIVE CENTER*

PAGE 18



**INSIDE**  
**Home & Garden**  
**Design**

Support Local Journalism Membership Drive • Page 10

visit [www.PaloAltoOnline.com](http://www.PaloAltoOnline.com)

- **Upfront** California Avenue plagued by vacancies Page 5
- **Eating Out** Going green with chef Martin Yan Page 21
- **Living Well** Senior sleuths shine in mystery series Page 24



## Moving forward, together.

Right now, in this moment of uncertainty, there's a promise we can count on: together, we'll continue to rise to the challenge and find a way forward.

Stanford Medicine, made up of Stanford Children's Health, Stanford School of Medicine, and Stanford Health Care, is working to end this pandemic.

We're answering the uncertainty with an unwavering commitment to our community, and meeting this moment with courage, compassion, and innovation.

Thank You, Bay Area, for standing with us, together.

Today. Tomorrow. Always.

*We are here for you.*

133 OLD LA HONDA ROAD, WOODSIDE



SUN 1:30 - 4  
\$5,995,000 • 3 Bed • 3.5 Bath • 133oldlahonda.com



**Erika Demma**  
650.740.2970  
DRE 01230766

1056 UNIVERSITY AVENUE, PALO ALTO



\$5,750,000 • 4 Bed • 3.5 Bath • 1056university.com



**Michael Hall | Tricia Soliz**  
650.465.1651 | 650.833.9442  
DRE 01133676 | DRE 01836700

190 PHILLIP ROAD, WOODSIDE



SUN 1:30 - 4  
\$5,495,000 • 4 Bed • 3.5 Bath • 190phillip.com



**Erika Demma**  
650.740.2970  
DRE 01230766

255 ALLEN ROAD, WOODSIDE



SUN 2 - 4  
\$2,595,000 • 4 Bed • 3 Bath • 255allen.com



**Erika Demma**  
650.740.2970  
DRE 01230766



**Evan Kohen**  
925.323.0746  
DRE 01963050

775 LAKEVIEW WAY, REDWOOD CITY



PENDING  
\$1,998,000 • 3 Bed • 2 Bath



**Sean Foley**  
650.207.6005  
DRE 00870112

1385 CAÑADA ROAD, WOODSIDE



Call For Price • 4 Bed • 6 Bath • 5.1 acres on 2 lots canadardwoodside.com



**Erika Demma**  
650.740.2970  
DRE 01230766



# OPEN HOUSE

SATURDAY 11/6 & SUNDAY 11/7 1:30 PM - 4:30 PM

SATURDAY ONLY



11665 DAWSON DRIVE  
LOS ALTOS HILLS  
\$4,488,000 | 4 Bd | 3.5 Bth  
[www.11665Dawson.com](http://www.11665Dawson.com)



410 8<sup>TH</sup> AVENUE  
MENLO PARK  
\$1,825,000 | 5 Bd | 3.5 Bth  
[www.4108thAve.com](http://www.4108thAve.com)

SUNDAY ONLY



1117 HAMILTON AVENUE  
PALO ALTO  
\$6,588,000 | 5 Bd | 5 Bth  
[www.1117Hamilton.com](http://www.1117Hamilton.com)

SATURDAY ONLY



1360 CLOUD AVENUE  
MENLO PARK  
\$3,100,000 | 4 Bd | 3 Bth  
[www.1360Cloud.com](http://www.1360Cloud.com)

SUNDAY ONLY



327 STOCKBRIDGE AVE  
ATHERTON  
\$12,988,000 | 5 Bd | 8 Bth  
[www.327Stockbridge.com](http://www.327Stockbridge.com)

SCHEDULE YOUR TOUR TODAY!



1251 COLLEGE AVENUE  
PALO ALTO  
\$5,498,000 | 5 Bd | 4.5 Bth  
[www.1251College.com](http://www.1251College.com)

Managing Broker: Michael Repka, DRE #01854880 | DeLeon Realty, DRE #01903224

**Daylight Saving Time is ending**



Set your clocks back one hour at 2 a.m. this Sunday.

## Plan to close Churchill near tracks faces backlash

*City Council defers decision on rail crossing after dozens express concerns about impact on traffic*

By Gennady Sheyner

Southgate neighborhood residents see some irony in the City Council's decision to call its campaign to redesign its rail crossings "Connecting Palo Alto."

The effort, which has been slowly advancing for more than

five years, includes three options for the Churchill Avenue crossing, which is just north of Southgate and serves as the neighborhood's main conduit for crossing the tracks and heading east.

Two of these — a viaduct and what's known as a "partial under-

crossing" — feature large concrete structures along the tracks. But it's the third option — the closure of Churchill to traffic near the tracks — that many see as the most divisive of the lot.

With a price tag of between \$50 million and \$65 million, the closure option is the cheapest of the three and it would take the least time to implement — about two years according to an analysis by

the city's consulting firm, Aecom.

It would usher in a suite of traffic improvements, including a reconfiguration of the clunky interchange of Alma Street and Embarcadero Road, and it would feature an underpass on Churchill for pedestrians and bicycles looking to get across the tracks.

The closure alternative has also won the endorsement of the Expanded Community Advisory

Panel (XCAP), a specially appointed citizen committee that voted 6-3 after 18 months of deliberation to support this option.

But for resident Susan Newman, who lives in Southgate, the closure option — more so than other two — epitomizes division. Like dozens of her neighbors, she believes that it would direct cars to other

(continued on page 12)



The former theater on California Avenue that housed *ZombieRunner* is for lease.

### BUSINESS

## 'A failing street'

*As vacancies plague California Avenue, can the shopping district make a comeback?*

By Lloyd Lee

Empty storefronts and "For Lease" signs have become a regular fixture along Palo Alto's California Avenue shopping district in recent years. As of this week, there were at least 13 storefronts that were vacant or for lease.

And as buildings remain empty and the number of attractions along the avenue wane, business owners and property managers who have maintained a stake on the dead-end street for multiple decades are now wondering if the city's second downtown can ever make a comeback.

Jessica Roth, owner of The Cobblers, which has operated on California Avenue since 1940, said this is the most vacancies she has seen since she took over her grandfather's shoe repair shop in 1994.

"In my entire life, we have never had more than three empty spaces on this street," said Roth, who is also vice president of the California Avenue Area Development Association, a business advocacy group for the shopping strip. "California Avenue is known for its longevity and keeping businesses."

Jon Goldman, co-president of Premier Properties, which manages over 70 buildings in Palo Alto, said, "The district is falling apart. There's no two ways about it."

In 2020 alone, longtime restaurants such as The Counter, Antonio's Nut House and even the Subway franchise have abandoned Palo Alto's once vibrant destination, with business owners either citing financial hardships or employee shortages due to the pandemic.

"COVID-19 affected us a lot," Amanda Lee, who has co-owned several Subways in Palo Alto since 2003, told the Weekly. "The rent is very high in Palo Alto, and we lost many employees during COVID."

Bank of the West also is set to move out of its longtime home at 414 S. California Ave. by the beginning of 2022, leaving behind

prime real estate and a big question mark around who will take over the building. (Redwood City's Arton Management Investments, which owns the Palo Alto property and several others in Redwood City, declined to comment.)

According to LoopNet.com, a commercial real estate website, Bank of the West has occupied the 6,195-square-foot space for over two decades.

Lucas Grzeszczuk, the branch manager at the California Avenue location, confirmed the move and said that the branch is relocating a few blocks away near 2700 El Camino Real. He declined to disclose why the branch is moving.

In 2016, Keeble & Shuchat photography store shuttered after 51 years of business, as the pho-

(continued on page 9)

### EDUCATION

## Parents put off by Cubberley plan

*Campus to accommodate two schools*

By Zoe Morgan

Plans to move Palo Verde and Hoover elementary schools to Cubberley Community Center and the adjacent Greendell site while their campuses are under construction moved ahead at Tuesday's meeting of the Palo Alto Unified School District's Board of Education, though some parents expressed strong concerns about the idea.

Palo Verde parents spoke out at the meeting against temporarily relocating their school — and some board members said they wished there had been more time for community input — even as the board unanimously signed off on beginning to design the temporary campus.

At Tuesday's meeting, the board also approved new long-term site goals for Cubberley, which include setting aside at least 20 acres for a theoretical future school, as well as approving the start of the design process for Hoover's new campus.

The board also heard an update on infrastructure repairs that are planned for Cubberley, although no formal vote was taken on that item.

Cubberley is a rundown 35-acre campus on Middlefield Road in south Palo Alto that was once a high school. The district owns 27 acres of the site, with the city of Palo Alto owning the remainder.

(continued on page 12)

CALLING FOR NOMINATIONS!



THE 42ND ANNUAL TALL TREE AWARDS MAY 2022

NOMINATIONS ARE DUE BY NOV. 30, 2021

- Outstanding Citizen Volunteer
- Outstanding Professional or Business Person
- Outstanding Nonprofit
- Outstanding Business

NOMINATION FORM AVAILABLE at [paloaltochamber.com](http://paloaltochamber.com)



SPONSORED BY



Questions? Call 650-324-3121 or email [info@paloaltochamber.com](mailto:info@paloaltochamber.com)

Palo Alto Weekly

450 Cambridge Ave., Palo Alto, CA 94306 (650) 326-8210

PUBLISHER

William S. Johnson (223-6505)

EDITORIAL

- Editor Jocelyn Dong (223-6514)
- Associate Editor Linda Taaffe (223-6511)
- Sports Editor Rick Eyrer (223-6516)
- Assistant Sports Editor Glenn Reeves (223-6521)
- Arts & Entertainment Editor Heather Zimmerman (223-6515)
- Express & Digital Editor Jamey Padojino (223-6524)
- Staff Writers Sue Dremann (223-6518), Zoe Morgan (223-6519), Gennady Sheyner (223-6513)
- Embarcadero Media Staff Writers Kate Bradshaw (223-6536), Kevin Forestieri (223-6535), Angela Swartz (223-6529)
- Chief Visual Journalist Magali Gauthier (223-6530)
- Editorial Assistant/Intern Coordinator Lloyd Lee (223-6526)
- Contributors Mike Berry, Carol Blitzer, Karla Kane, Yoshi Kato, Chris Kenrick, Sheryl Nonnenberg

ADVERTISING

- Vice President Sales & Marketing Tom Zahiralis (223-6570)
- Multimedia Advertising Sales Elaine Ogden (223-6572), Connie Jo Cotton (223-6571)
- Real Estate Advertising Sales Neal Fine (223-6583)
- Legal Advertising Alicia Santillan (223-6578)

ADVERTISING SERVICES

- Advertising Services Manager Kevin Legarda (223-6597)
- Sales & Production Coordinator Diane Martin (223-6584)

DESIGN

- Design & Production Manager Kristin Brown (223-6562)
- Senior Designers Linda Atliano, Paul Llewellyn
- Designers Kevin Legnon, Sam Olson, Mary Watanabe, Douglas Young

BUSINESS

- Assistant Business Manager Gwen Fischer (223-6575)
- Business Associates Nico Navarrete (223-6582), Suzanne Ogawa (223-6543)

ADMINISTRATION

- Courier Ruben Espinoza

EMBARCADERO MEDIA

- President William S. Johnson (223-6505)
- Vice President Michael I. Naar (223-6540)
- Vice President & CFO Peter Beller (223-6545)
- Vice President Sales & Marketing Tom Zahiralis (223-6570)
- Director, Information Technology & Webmaster Frank A. Bravo (223-6551)
- Director of Marketing and Audience Development Emily Freeman (223-6560)
- Major Accounts Sales Manager Connie Jo Cotton (223-6571)
- Circulation Assistant Alicia Santillan
- Computer System Associates Chris Planessi, Mike Schmidt

The Palo Alto Weekly (ISSN 0199-1159) is published every Friday by Embarcadero Media, 450 Cambridge Ave., Palo Alto, CA 94306, (650) 326-8210. Periodicals postage paid at Palo Alto, CA and additional mailing offices. Adjudicated a newspaper of general circulation for Santa Clara County. The Palo Alto Weekly is delivered to homes in Palo Alto, Menlo Park, Atherton, Portola Valley, East Palo Alto, to faculty and staff households on the Stanford campus and to portions of Los Altos Hills. POSTMASTER: Send address changes to Palo Alto Weekly, 450 Cambridge Ave., Palo Alto, CA 94306. ©2021 by Embarcadero Media. All rights reserved. Reproduction without permission is strictly prohibited. The Palo Alto Weekly is available on the Internet via Palo Alto Online at: [www.PaloAltoOnline.com](http://www.PaloAltoOnline.com)

Our email addresses are: [editor@pawebkly.com](mailto:editor@pawebkly.com), [letters@pawebkly.com](mailto:letters@pawebkly.com), [digitalads@pawebkly.com](mailto:digitalads@pawebkly.com), [ads@pawebkly.com](mailto:ads@pawebkly.com)

Missed delivery or start/stop your paper? Email [circulation@pawebkly.com](mailto:circulation@pawebkly.com). You may also subscribe online at [PaloAltoOnline.com](http://PaloAltoOnline.com). Subscriptions are \$120/yr.

SUPPORT LOCAL JOURNALISM

Become a Paid Subscriber for as low as \$5 per month

Sign up online at [www.PaloAltoOnline.com/join](http://www.PaloAltoOnline.com/join)

Upfront

QUOTE OF THE WEEK



The district is falling apart.



— Jon Goldman, co-president of Premier Properties, about rising vacancies on California Avenue. See story on page 5.

Around Town

**OFF TO GLASGOW ...** All eyes are on the 26th United Nations Climate Change Conference (COP26) now underway in Glasgow, Scotland, and the Peninsula's very own Sen. Josh Becker is part of the 22-member California delegation at the international meeting. It's quite fitting that the state is sending Becker, D-Menlo Park, who is a venture capitalist for green businesses. He also chairs the Senate Subcommittee on the Clean Energy Future and serves as vice chair of the Joint Legislative Committee on Climate Change Policies. In an interview Monday with ABC7 News, he discussed his goals for the two-week event where world leaders discuss what actions they can take to fight climate change. "I'm there to show California's commitment, to show how we've done it, how we've led in electricity, how we've led in electric vehicles, our No. 1 export as a state," he said. Becker also views the summit as an opportunity to gather ideas, such as how to utilize offshore wind power, which would work well with the state's solar energy and onshore wind energy. He acknowledged that whatever comes out of the summit will fall short of where the world should be given the absence of China's leaders, but believes the representatives can walk away "with a shared sense of momentum. ... It's truly about transforming every aspect of our economy." COP26 started on Oct. 31 and ends on Nov. 12.

Overall, the Bay Area's nearly 44,000 lanes-miles of streets and roads scored 67 out of 100 points, which is "computed on a three-year moving average basis," according to a Nov. 3 press release. "Some of the pavement work scheduled for last year was delayed by the COVID-19 pandemic," MTC Chair Alfredo Pedroza said in the release. "But the new scores illustrate how big a challenge it is to bring our roads ... to a state of good repair."

**VAX VIDS FOR CASH ...** For several months now, health leaders have spread the message of getting vaccinated against COVID-19 through press conferences, public service announcements and government meetings, just to name a few examples. Santa Clara County is passing the mic to local youth who are encouraged to join its VaxUp Video Contest, where they can produce short videos that inform their peers about COVID-19 vaccination. The competition is open to students in grades 6 through 12 and is divided into two categories: middle school and high school. The contest aims to help increase youth vaccination, an area that is behind in inoculation compared to other age groups in the county, despite people ages 12 and up becoming eligible for doses this past spring. "Our kids and teens have shown us many times over how this pandemic has affected them on a personal level," Dr. Monika Roy, the county's assistant health officer, said in a press release. "This contest gives them a creative outlet to show the community what vaccinations mean to them." To compete, students must be grades 6-12 in Santa Clara County and have an adult sponsor who's affiliated with the school. Submissions, which must be 30 to 60 seconds long, can be created in teams of up to five students and posted on Instagram and TikTok with the hashtag #sccVaxUpVideo. Cash prizes are on the line. The top three winners will be awarded \$1,500, \$1,000 and \$500, respectively, with another \$500 going to the school of the first-place winners. Entries are due by Nov. 15. For more information, visit [SCCVaxUpVideo.org](http://SCCVaxUpVideo.org). ■

**SMOOTH RIDE ...** When it comes to maintaining local roads, Palo Alto knows how to give them the attention they deserve, as seen through new data made public this week by the Metropolitan Transportation Commission. On Wednesday, the agency issued its 2020 Pavement Condition of Bay Area Jurisdictions report, which gave the city a Pavement Condition Index score of 84 based on a total 414 miles of road. Palo Alto is among 10 jurisdictions that saw their three-year PCI scores fall under the "very good" range, which connotes "slight or moderate distress." The city has maintained a score of 84 for the past three years. The new report shows Palo Alto was one point behind Cupertino, which topped the regional list, and

Answers to this week's puzzles, which can be found on page 27.

J	A	M	U	P	S		H	O	W		P	A	A	R	
O	C	A	S	I	O		A	B	A		A	C	R	E	
S	A	L	E	M	F	E	L	I	X		P	E	E	N	
I	D	O		M	I	L	A				T	A	N	Y	
A	I	R	S		A	L	L	B	A	L	L	T	O	M	
H	A	T	C	H				E	S	C		R	U	E	
				O	U	I		L	E	O		D	I	O	
H	E	A	T	H	C	L	I	F	F	S	O	C	K	S	
A	N	U	T		O	A	T			T	H	U			
M	D	T		U	N	I				A	G	L	E	T	
S	P	O	T	M	O	R	R	I	S		H	E	X	A	
A	L	S	O	P			I	N	C	A		V	I	N	
L	A	H	R		D	C	G	A	R	F	I	E	L	D	
A	T	O	O		A	H	I		O	A	K	L	E	Y	
D	E	W	S		M	O	D			D	R	E	A	D	S

7	6	1	4	8	5	9	2	3
4	5	3	9	2	6	8	1	7
8	9	2	1	3	7	6	5	4
5	7	9	6	1	3	4	8	2
1	2	8	5	9	4	7	3	6
3	4	6	8	7	2	5	9	1
9	3	5	7	6	1	2	4	8
2	8	7	3	4	9	1	6	5
6	1	4	2	5	8	3	7	9

PUBLIC HEALTH

# 'A momentous milestone': COVID-19 vaccine eligibility opens up to kids ages 5-11

Broad access to doses available in San Mateo and Santa Clara counties

By Sue Dremann and Angela Swartz

**C**COVID-19 vaccines for children ages 5 to 11 are now available in Santa Clara and San Mateo counties, health officials announced on Wednesday.

The announcement comes after the Centers for Disease Control and Prevention (CDC) approved emergency use authorization of the Pfizer-BioNTech vaccine for this age group, long considered a critical component of protecting the community and returning society to normalcy after the nearly two-year pandemic.

The CDC and the U.S. Food and Drug Administration authorized the vaccines for younger school-aged children after extensive review. California also required a review by the independent Western States Scientific Safety Review Workgroup, which conducts its own review and approval of the safety and efficacy of the vaccines.

Pediatric COVID-19 vaccine doses are one-third the amount of adult doses and are specially formulated for the younger age group, health officials in both counties noted. Two doses given 21 days apart are needed to produce maximum immunity.

The Pfizer vaccine is the only one currently available for younger children, while the Moderna and Janssen/Johnson & Johnson

vaccines, along with Pfizer, are plentiful and available for anyone ages 12 and older, including as booster shots for adults ages 65 and up and to anyone over 12 years old who has a medical condition or work situation that makes them vulnerable for serious illness from the virus.

Santa Clara County got started on vaccinating 5-to-11-year-olds on Wednesday, said Dr. Jennifer Tong, associate chief medical officer for Santa Clara Valley Medical Center.

"We feel very confident that we can vaccinate over 20,000 kids this week," she said.

There are 167,000 children in the age group in Santa Clara County, according to the Public Health Department. Tong said six vaccination sites opened Wednesday and others are expected as needed. Because of expected high demand, the clinics require an appointment; drop-ins may be allowed at a later date. Residents can sign up at [scffreevax.org](http://scffreevax.org) and also find updates on the website.

The county is using its mobile vaccination clinic to provide shots on site at 80 schools in higher-risk ZIP codes throughout the county, she said.

Tong said that while the number of hospitalizations from COVID-19 have gone down, there are children in the 5 to 11 age group,

mostly those with underlying health conditions, who have been hospitalized. She urged parents to vaccinate their children.

"We don't yet know the long-term effects of infection," she said, noting the "long COVID-19" syndrome. Getting this age group vaccinated will also go a long way toward lifting the indoor mask mandate, county officials have said.

The Santa Clara County Office of Education on Wednesday also released a statement promoting the importance of youth vaccinations in keeping schools open for full-time, in-person instruction.

"Vaccines are safe and effective in reducing the spread of COVID-19 in our homes, schools and communities," said Dr. Mary Ann Dewan, Santa Clara County's superintendent of schools. "Promoting vaccine access to all eligible children in Santa Clara County is one of the leading public health strategies for preventing illness and continuity of in-person schooling."

Children will receive a white CDC COVID-19 vaccine record card in addition to a children's yellow immunization card, if they have one. Both cards will be updated so parents or guardians are encouraged to bring the yellow card to their child's appointment, the Office of Education said.

Families are encouraged to reach out to their child's doctor or health care specialist to ask any questions they may have about their child's vaccination and to see if they are offering vaccine appointments for children.

Palo Alto Unified School District plans to hold vaccination clinics for children in the 5-to-11-age group. The district is working on details with a new provider, Covid Clinic, or would work again with Safeway as the district previously has done to provide students who are 12 and older with the vaccines, Rose Dowell, health services coordinator, said.

Local pharmacies, including CVS, Safeway, Lucky Supermarkets, and Walgreens, also plan to offer vaccines for the 5-to-11-year-old group at some of their locations. Residents should check the [MyTurn.ca.gov](http://MyTurn.ca.gov) and pharmacy chain websites to confirm availability. As of Wednesday, Costco and Rite-Aid had not indicated a plan to offer these pediatric vaccines, the county noted.

Stanford Children's Health is also offering the vaccines at 25 pediatric clinics throughout the Bay Area. Information and scheduling links are available online at [stanfordchildrens.org/en/landing/covid-vaccine](http://stanfordchildrens.org/en/landing/covid-vaccine), while Sutter Health/Palo Alto Medical Foundation hasn't yet started scheduling, according to its website.

The Office of Education, the county Public Health Department and Stanford Health Care will host a virtual town hall at 6 p.m. on Monday, Nov. 8, to answer questions and provide additional information to families regarding the COVID-19 vaccine. To attend the town hall, visit [sccoe.to/YouthVaxTH](http://sccoe.to/YouthVaxTH).

## Clinics lined up in San Mateo County

San Mateo County will offer a child-focused, walk-up vaccination clinic on Saturday, Nov. 6, at the San Mateo County Event Center at 1346 Saratoga Drive in San Mateo, health officials said in a statement. Appointments are required for Saturday's pediatric clinic and can be made at [myturn.ca.gov](http://myturn.ca.gov).

Menlo Park City School District administrators are hosting vaccine clinics, with Safeway Pharmacy, for the age group on Saturday, Nov. 6, and Sunday, Nov. 7, from 9 a.m. to 4 p.m. at Hillview Middle School, 1100 Elder Ave. in Menlo Park. Visit [district.mpcsd.org/Hillview](http://district.mpcsd.org/Hillview) for information. Nearly 1,700 kids have signed up and the district is at maximum capacity, Parke Treadway, the district's public information officer, said in an email.

"As a parent of young children myself, the day they can be vaccinated is one I have been looking forward to for a long time," Superintendent Erik Burmeister said in an email. "I think we all feel this is a momentous milestone in reaching the end of this pandemic."

Ann Waterman Roy, strategic pandemic recovery consultant for the Ravenswood City School District, said the district is working to get its health care partners to set up clinics at its three elementary schools.

While some parents are already eager to have their children vaccinated, the district expects that others will benefit from planned information sessions at the schools with local doctors who can answer questions, she said. ■

*Email Staff Writers Sue Dremann and Angela Swartz at [sdremann@paweeekly.com](mailto:sdremann@paweeekly.com) and [aswartz@almanacnews.com](mailto:aswartz@almanacnews.com).*



Editorial staff members from the Palo Alto Weekly talk about stories during a Zoom meeting in June.

MEDIA

## Weekly launches first-ever Fall Membership Drive

Readers can support local journalism by becoming annual subscribers

**A**merican newspapers, once robustly funded by advertising revenue, are increasingly turning to readers for financial support, much as public radio and television stations have been doing for years.

Advertising revenues for newspapers across the U.S. declined 62% between 2008 and 2018, ac-

ording to a 2021 Pew Research Center report — falling from \$37.8 billion in 2008 to \$14.3 billion in 2018.

Like news organizations throughout the country, the Palo Alto Weekly has been working for the past three years to offset the decline in local advertising. It now boasts a membership pro-

gram through which readers can support the work of the Weekly's journalists.

This month, the Weekly is hosting its first-ever Fall Membership Drive to call attention to the membership program.

Between now and Nov. 11, readers can join thousands of others who are already members of the Palo Alto Weekly and PaloAltoOnline.com by becoming a Basic Annual Member at \$120. Out of each subscription, the Weekly will donate 10% to the Palo Alto Weekly Holiday Fund, the company's annual campaign to raise money for local nonprofits. This past year, the fund distributed \$680,000 to community service groups in the Palo Alto and East Palo Alto area.

According to a Gallup/Knight Foundation survey in 2020, local news boosts residents' knowledge about their community and strengthens their sense of connection to it.

"Our future as an essential source of local news and information and the future of local nonprofit organizations are vital to the health of the community," said Bill Johnson, publisher of

the Weekly. "By helping us reach our goal of 300 new members between now and Nov. 11, you can support both."

For those who are among the

first 100 to sign up at [PaloAltoOnline.com/join](http://PaloAltoOnline.com/join), they will receive a long-sleeve 100% cotton Moonlight Run shirt. ■

— Palo Alto Weekly staff

## Public Agenda

A preview of Palo Alto government meetings next week

**CITY COUNCIL ...** The council plans to hold a study session to discuss the Safe Routes to School program; continue its discussion of revisions to objective standards for new developments; discuss the business tax measure that is proposed for the 2022 ballot; and consider policies to assist renters. The meeting will begin at 5 p.m. on Monday, Nov. 8, in the Council Chambers at City Hall, 250 Hamilton Ave. Those wishing to participate by Zoom can do so by dialing 669-900-6833 and using Meeting ID: 362 027 238.

**COUNCIL POLICY AND SERVICES COMMITTEE ...** The committee will hear presentations from the Office of the City Auditor about utilities power purchase agreements and about construction project controls. The virtual meeting will begin at 6 p.m. on Tuesday, Nov. 9. Those wishing to participate by Zoom can do so by dialing 669-900-6833 and using Meeting ID: 992 2730 7235.

**PLANNING AND TRANSPORTATION COMMISSION ...** The commission plans to discuss 985 Channing Ave., a request to remove recorded height restrictions on the underlying parcel; review programs in the Comprehensive Plan's Implementation Chapter; and consider adopting a resolution to enable teleconferencing for commission meetings during the COVID-19 emergency. The virtual meeting will begin at 6 p.m. on Wednesday, Nov. 10. Those wishing to participate by Zoom can do so by dialing 669-900-6833 and using Meeting ID: 965 6189 1491.

COMMUNITY SERVICES

# It's back! Expanded Junior Museum and Zoo to reopen on Nov. 12

Upgraded facility provides sensory experience for people of all abilities

By Lloyd Lee

**H**anging over the small tunnel that leads to the cichlid fish exhibit at Palo Alto's newly renovated Junior Museum and Zoo, sprawling fake tree roots have been meticulously sculpted to blend into the natural elements of the facility.

The zoo's executive director, John Aikin, grabbed onto one of the artificial roots as he squatted down during a media preview of the facility on Oct. 28 to demonstrate how someone in a wheelchair might access the crawl space. The roots were not arranged like that by accident but by careful design to assist visitors with special needs, Aikin explained.

The Junior Museum and Zoo on Middlefield Road, which is set to reopen on Nov. 12, was designed with a focus on accessibility for visitors of all mental and physical abilities, he said.

"Our exhibits all have multiple ways of approaching them," said Aikin, who was hired to lead the Palo Alto Junior Museum and Zoo staff in 2008. "They engage people of different ages, knowledge bases, and they include people of different abilities."

After two years of construction, the Junior Museum and Zoo (JMZ) now boasts about 34,000 square feet, nearly double the square footage of the old 19,000-square-foot facility. The facility includes larger classrooms and a deck that will host educational programs.

But the centerpiece is an 18,000-square-foot outdoor zoo,

which houses more than 50 animal species and features a two-story, wheelchair-accessible treehouse that parents and children can climb to get an overview of the zoo's landscape.

The outdoor zoo area is called Loose-in-the-Zoo and attempts to immerse people into the context of natural wildlife habitats, Aikin said. The area features various plant life, boulders and water structures.

There, visitors have an opportunity to feed American flamingos, hear the screech of Manusela, a Moluccan cockatoo named after the Manusela National Park, and visit Edward, a 21-year-old rescued African tortoise raised by a local Palo Alto family.

Overhead is a netted roof so that most of the zoo's birds can roam freely above and alongside guests, except for the colorful macaws, which according to Aikin, are equipped with beaks strong enough to crack open Brazil nuts. (Their wings are clipped, the director said.)

The animals at JMZ come from a wide range of sources: Some are rescues from local households; others are from accredited zoos from around the globe, according to Aikin.

"The scarlet ibises, the flamingos, the African spoonbills, the hamerkop, the Von der Deken's hornbill, the ring-tailed lemurs — all are part of a population of animals in accredited zoos that are managed for the long haul, which

means that we know about their genetics and we move them around and breed them appropriately to preserve genetic diversity," he said.

The campus' indoor museum is an ode to science with interactive exhibits that allow children to experience gravity, motion, electricity and magnetism, among other natural phenomena.

Visitors can push a golf ball onto a winding track and follow its path in the museum's ball exhibit or see the contortion of the magnetic field by playing with magnetic sand.

In front of each exhibit are signs written in two languages, Spanish and English, with "highly readable text" and some Braille, according to Aikin. There are also QR codes to provide visitors with aids for reading or seeing, he said.

In addition to the more subtle accessibility features are two large calming nooks (one inside and outside) with "bubble walls" to provide a safe, quiet space for over-stimulated children or nursing mothers. There also are restroom stalls that include adult-sized changing tables. Brent McClure, a principal at CAW architects, helped design the city's new facility with Studio Hanson Roberts, a design firm that specializes in zoos and aquariums.

Aikin credits much of the facility's focus on accessibility to Tina Keegan, an exhibits director at JMZ.

"Tina Keegan took on the initiative to make the most accessible museum in the country," Aikin said during the tour. "And I think



Rey Martinez Han feeds flamingoes at the Junior Museum and Zoo in Palo Alto during a preview event on Oct. 28.

we're definitely heading there."

During construction, parts of the popular city attraction were housed at Cubberley Community Center.

A majority of the \$33-million expansion project — about \$25 million — was funded by donations to the nonprofit Friends of the Palo Alto Junior Museum and Zoo. The Peery Foundation has provided \$15 million for the project. About \$10 million came from other local donors, along with an \$8 million contribution from the city, according to a press release.

The hefty investment allowed the JMZ to remain at its original site at Rinconada Park.

"In talking about sites and where we were going to rebuild, we decided to rebuild on our site in Palo Alto, which kept us constrained," Aikin told the Palo Alto Weekly. "It meant that we had to stay small because we're in a residential neighborhood. But the relationship that this institution has with its community was well worth that trade-off."

The JMZ was in the final stages of completion during the recent media tour. Some animals, such

as the lemurs, had yet to arrive at the facility due to travel restrictions. (According to Aikin, lemurs are able to be infected with COVID-19 just like humans and consequently are unable to travel on commercial airlines for now.)

The facility will be run by 20 half-time staff members and eight full-time employees, Aikin said. Each staff member is in the process of being trained to know how to interact and be mindful of parents with children who may be on the autism spectrum.

"We now have kits to train staff and consultants that come in so that everybody understands how you can help a mom whose got an overstimulated kid on the spectrum, and be respectful to her and everybody around them, so that we make the process as inclusive, painless and accommodating as possible," Aikin said.

The zoo is set to open to the public on Nov. 12. Visitors can purchase tickets in advance by going to [cityofpaloalto.org](http://cityofpaloalto.org) and searching for "Junior Museum and Zoo." ■

Email Editorial Assistant Lloyd Lee at [llee@paweekly.com](mailto:llee@paweekly.com).

PUBLIC HEALTH

# Long-term COVID-19 could affect millions, particularly younger adults

Local health experts examine and plan for impacts of syndrome that can last for months

By Sue Dremann

**A**s COVID-19 infections decline in Santa Clara and San Mateo counties, the medical profession is grappling with another facet of the disease — mysterious symptoms that researchers say can persist for months.

Called "long COVID-19," the syndrome can cause a constellation of symptoms: breathing difficulty, headaches, debilitating fatigue, brain fog and organ damage.

Whether long COVID-19 will last a few months, a few years or a lifetime will take time to understand, a group of medical professionals and researchers said during a special hearing of the Santa Clara County Health and Hospitals

Committee on Oct. 26. Many COVID-19 long-haulers can't work or attend school. How younger populations, including children, will fare over the long term or whether they will develop learning abilities and health issues with societal impacts remains unclear.

To treat those afflicted with the illness, local and national governments will need to develop policies and multidisciplinary teams of physicians to address the physical, cognitive and psychological challenges posed by long COVID-19, the researchers told the health and hospitals committee.

### What is long COVID?

Long COVID-19 can be many things. Just exactly where the

dividing line lies between COVID-19's persistent symptoms and long COVID-19 syndrome is not easily definable.

It's not unusual for COVID-19 patients to have symptoms for two weeks to two months after an acute infection, said Dr. Brian Block, assistant professor at University of California, San Francisco, School of Medicine Division of Pulmonary, Allergy, Critical Care and Sleep Medicine and the associate director of the medical ICU.

But that's not long COVID-19. Long COVID-19 is a syndrome of persistent symptoms lasting at least two or three months after the initial infection. Typically, people

(continued on page 16)

# CityView

A round-up of Palo Alto government action this week

## City Council (Nov. 1)

**Homekey:** The council amended its ordinance to authorize an application for a Project Homekey grant to facilitate the construction of an 88-unit complex for unhoused individuals at 1237 San Antonio Road. The project's cost was amended from \$17.4 million to \$26 million. **Yes:** Burt, Cormack, DuBois, Filseth, Kou, Stone **No:** Tanaka

**Churchill:** The council heard public comments about design alternatives for the Churchill Avenue rail crossing and continued its discussion to Nov. 15. **Yes:** Unanimous

## Board of Education (Nov. 2)

**Construction:** The board unanimously approved beginning the design process for a temporary school campus at Cubberley Community Center and the adjacent Greendell site. The site would house Palo Verde and then Hoover elementary schools while their campuses are under construction. **Yes:** Unanimous

**Cubberley:** The board revised its long-term site goals for Cubberley Community Center. The goals now include retaining at least 20 acres of land for a theoretical future school, but no longer include moving the district office to Cubberley or building staff housing on the land. In the same vote, the board also approved designing a new campus for Hoover Elementary School. **Yes:** Unanimous

## Council Finance Committee (Nov. 2)

**Fire:** The committee discussed financial and staffing trends in the Fire Department. **Action:** None

## Utilities Advisory Commission (Nov. 3)

**Resiliency:** The commission heard a presentation on the impacts of decarbonization on resiliency in single-family homes. **Action:** None



## Vacancies

(continued from page 5)

tography industry morphed and customers increasingly turned to online shopping. That, along with a scarcity of parking and increasing development in the California Avenue area, made the closure necessary, owner Terry Shuchat said at the time. Portions of the large corner building still remain vacant and available for lease.

Last year, Antonio's Nut House, a popular local dive bar, shut down after 49 years due to pandemic-related restrictions on bars and a looming expiration date on the lease that was held by the late Tony Montooth, the original owner of the bar. The building is currently being gutted and a lease sign is in the window.

"We're losing a lot of money. It's just too difficult to conform to all the regulations and maintain our pricing," Jess Montooth, son of Tony, previously told the Weekly.

In addition, 440 S. California Ave., the longtime home of Country Sun Natural Foods, was listed for sale for \$6 million on LoopNet in October.

A person connected to the grocery market, who spoke on the condition of anonymity, emphasized that anything in terms of a sale remains tentative.

"Country Sun is not moving," the person said. "We have no idea if (the property is) going to be sold or not. Even if it is sold, (the store) won't move."

### Street closure — a mixed blessing

The city has taken measures to support local businesses in the commercial district during the pandemic. Most notably, it temporarily closed California Avenue to traffic to allow restaurants to offer street dining while health mandates limited indoor dining.

In September, the council voted to extend the popular street dining program until at least next June.

"Overall, the city has worked to help promote retail and retail-like uses on California Avenue," Meghan Horrigan-Taylor, the city's chief communication officer, wrote in an email.

The City Council is scheduled to discuss longer-term closures on Nov. 15, she added.

But some retailers say the benefits of the program are not shared among all businesses on a street dominated by restaurants.

As a retail store that relies on impulse walk-ins, Roth believes that the street closure continues to negatively impact her business.

"Retail is a very funny thing where sometimes you don't know that you want something until you see it," she said. "And walking up the middle of the street, you're not going to see my retail."

### Businesses move in, despite tough conditions

As someone who has sounded the alarm bells for several years to the city about California Avenue, Goldman said businesses are not clamoring to grab the vacant locations in the commercial district.

But the avenue will welcome a few newcomers soon.

Recently, Goldman's Premier Properties, which currently lists five retail locations on California Avenue available for lease on its website, helped secure a retail space for Nob Hill Hardware at 251 California Ave., next to FedExOffice. While it's an exciting opportunity to add a retail use to the street, Goldman said the level of permitting and inspection that the business had to undergo for a 3,144-square-foot space has been "brutal."

"This construction has been going on for more than one and a half years ... and they're not building anything," he said.

## California Avenue vacancies



In addition, boba shop Ume Tea is preparing to move into the former Subway site at 421 S. California Ave. And Local Kitchens, which describes itself as a "digital food hall" focused on food delivery service apps, is set to take over the former location of The Counter in November. Customers can order from a variety of restaurants and pick up their food at the location.

"We couldn't be more thrilled to bring our micro food hall to California Avenue, which will feature a mix of incredible Bay Area restaurants including Señor Sisig, Wise Sons Deli and The Melt," Jon Goldsmith, CEO of Local Kitchens, wrote in an email. "The reaction from guests has been tremendous since our inaugural store launch last year, and we are excited to serve Palo Altans with convenient and diverse food options."

Other than these new retailers, however, businesses that consider

moving to the avenue are facing tough conditions — some of which predate the pandemic, retailers said.

Property managers and business owners who spoke to the Weekly pointed to what they considered questionable policy decisions the city made over past years that have only made it more difficult to operate a business and attract willing newcomers.

Roth at The Cobblery, for example, highlighted one ordinance that she ironically once supported by gathering petition signatures for its implementation: the "formula retail" policy adopted in 2015, which restricts chains with more than 10 locations from setting up shop on California Avenue. The law made exceptions for Benjamin Moore Paints, The Counter, FedEx, Starbucks and Subway, which already operated on the street at the time.

"That's one of the things that

maybe needs to be relooked at," Roth said.

Mike Meffert, a commercial real estate agent for Alhouse Deaton who has worked in the Peninsula for 20 years and also owns an office building at 480 S. California Ave., agreed that the formula retail policy is among the barriers that could be deterring businesses that may have the ability to increase foot traffic on the street.

"As far as I know, other cities (with downtown districts) don't have this formula retail restriction," he said. "I think that is fairly unique."

More recently, the city enacted new policies around parking that have left business owners frustrated and feeling that they were left out of the conversation when changes were discussed.

On Oct. 5, the city agreed to increase the cost of parking permits for its public garages and eliminate its on-street parking permit program in the Evergreen Park and Mayfield residential neighborhoods, which employees in the California Avenue district rely on for parking.

The city expects cars to move off neighborhood streets and into the new 626-space garage at 350 Sherman Ave. and has assured that the structure is large enough to support the 250 or so vehicles that currently use the on-street permit parking program.

Michael Ekwall, owner of La Bodeguita del Medio on 463 California Ave., believes that the new parking policies are a blow to the business district, especially as the restaurant industry continues to struggle with an employee shortage.

"We're in a very challenging position right now in terms of being able to fully staff our business and when our people can't get parking permits, it just makes it worse," Ekwall said. ■

## Online This Week

These and other news stories were posted on Palo Alto Online throughout the week. For longer versions, go to [www.PaloAltoOnline.com/news](http://www.PaloAltoOnline.com/news).

### Palo Alto revisits tenant protections

Palo Alto City Council will consider on Monday new restrictions on evictions as well as a cap on rent increases as part of a menu of options to provide relief to local renters at a time of astronomical housing costs. (Posted Nov. 4, 9:27 a.m.)

### Firefighters 'burned out'

Budget cuts and position reductions have taken their toll on the Palo Alto Fire Department, where fewer people are now responding to more medical calls and personnel are increasingly reporting feeling burned out, according to Fire Chief Geo Blackshire. (Posted Nov. 3, 9:50 a.m.)

### All residents eligible for COVID tests

The Palo Alto Unified School District began offering free COVID-19 tests to any Palo Alto resident, regardless of their connection to the school district, starting Monday, Nov. 1. (Posted Nov. 1, 9:29 a.m.)

### Ravenswood school district seeks lease bids

The Ravenswood City School District's governing board voted 5-0 to begin to solicit bids for long-term leases at its district office and a shuttered school, potentially for housing and office space, during its Thursday night meeting on Oct. 28. (Posted Nov. 1, 9:03 a.m.)

## Public Notices

### 995 Fictitious Name Statement

HOOLOCK PARTNERS  
FICTITIOUS BUSINESS NAME STATEMENT  
File No.: FBN679053  
The following person (persons) is (are) doing business as:  
Hoolock Partners, located at 317 Everett Avenue, Palo Alto, CA 94301, Santa Clara County.  
This business is owned by: A General Partnership.  
The name and residence address of the registrant(s) is(are):  
WILLIAM EDWARD HULBERT  
317 Everett Avenue  
Palo Alto, CA 94301  
ELIZABETH MILDRED MORGAN  
317 Everett Avenue  
Palo Alto, CA 94301  
Registrant began transacting business under the fictitious business name(s) listed above on 02/01/2021.  
This statement was filed with the County Clerk-Recorder of Santa Clara County on September 24, 2021.  
(PAW Oct. 22, 29; Nov. 5, 12, 2021)

MAC'S SMOKE SHOP  
FICTITIOUS BUSINESS NAME STATEMENT  
File No.: FBN679774  
The following person (persons) is (are) doing business as:

Mac's Smoke Shop, located at 534 Emerson St., Palo Alto, CA 94301, Santa Clara County.  
This business is owned by:  
A Corporation.  
The name and residence address of the registrant(s) is(are):  
KHOURY'S UP IN SMOKE INC.  
534 Emerson St.  
Palo Alto, CA 94301  
Registrant began transacting business under the fictitious business name(s) listed above on 10/06/2006.  
This statement was filed with the County Clerk-Recorder of Santa Clara County on October 20, 2021.  
(PAW Oct. 29; Nov. 5, 12, 19, 2021)

LUXILY THE LABEL  
FICTITIOUS BUSINESS NAME STATEMENT  
File No.: FBN679957  
The following person (persons) is (are) doing business as:  
Luxily The Label, located at 1654 Burdette Dr. Unit 160, San Jose, CA 95121, Santa Clara County.  
This business is owned by: A General Partnership.  
The name and residence address of the registrant(s) is(are):

JADE KRISTEN LEYNES FAVIS  
5568 Lexington Ave. 304  
San Jose, CA 95123  
SARA NAM  
282 Ridge Vista Ave.

San Jose, CA 95127  
Registrant has not yet begun to transact business under the fictitious business name(s) listed above.  
This statement was filed with the County Clerk-Recorder of Santa Clara County on October 27, 2021.  
(PAW Nov. 5, 12, 19, 26, 2021)

GUZMAN AND SONS TRUCKING  
FICTITIOUS BUSINESS NAME STATEMENT  
File No.: FBN679883  
The following person (persons) is (are) doing business as:  
Guzman and Sons Trucking, located at 1570 Almond Way, Morgan Hill, CA 95037, Santa Clara County.  
This business is owned by: An Individual.  
The name and residence address of the registrant(s) is(are):  
ABONFILIO E. GUZMAN  
1570 Almond Way  
Morgan Hill, CA 95037  
Registrant began transacting business under the fictitious business name(s) listed above on 09/14/21.

This statement was filed with the County Clerk-Recorder of Santa Clara County on October 25, 2021.  
(PAW Nov. 5, 12, 19, 26, 2021)

Call Alicia Santillan at 650-223-6578 or email [asantillan@pawebly.com](mailto:asantillan@pawebly.com) for legal advertising.

Kindel Launer  
Kathie Laurence  
Scott Laurence  
Lew Laurent  
Danielle Laursen  
Kirk Laursen  
Mary Lautner  
Jeanne M Lavan  
Roy Lave  
Donna Lawrence  
Mark Lawrence  
Charlotte Lawson  
Gabrielle Layton  
Andrew Lazenby  
Judith Leahy  
Grady Leaver  
Cherry Lebrun  
Helen Lechner  
Alan Lee  
Chisoon Lee  
Crystal Lee  
David Lee  
Dee Lee  
Diana Lee  
Elgin Lee  
Elizabeth Lee  
Georgia Lee  
Glen Lee  
Kathleen Lee  
Kimberly Lee  
Mj Lee  
Rich Lee  
Rita Lee  
Jan Leeman  
Mary Ruth Leen  
Mb Cebedo Lefebvre  
Harriet Lehrbaum  
Ruth Leibig  
Janet Leigh  
Kevin Leighton  
Morton Leiter  
Varsha Lele  
Stephen Lemay  
Ben Lenail  
Rob And Lucinda  
Lenicheck  
Linda Lenoir  
Mary Leon  
Rebecca Leon  
Nelly Leong  
Eileen Lerch  
Ben Lerner  
John Leslie  
Terry Lesser  
Yin Ling Leung  
Susan Levenberg  
Corey Levens  
Laurie Leventhal-  
Belfer  
Michael Levin  
Peter Levin  
Sarah Levine  
Sharon Levine  
Susanne Levitsky  
Kathleen Levitt  
Donald Levy  
Indra Levy  
Laurie Levy  
Leland Levy  
Rebecca Levy  
Robin Levy  
Stephen Levy  
Keith Lew  
Bruce Lewenstein  
Brian Lewis  
Clinton Lewis  
Erica Lewis  
Leslie Lewis  
Marina Lewis  
Mark Lewis  
Mark Edward Lewis  
Sanford Lewis  
Sheila Lewis  
Todd Lewis  
Ann Lewnes  
Janice Leyrer  
Jennifer Lezin  
Ruth Li  
Susan Li  
Alyssa Liang  
Arthur Liberman  
Linda And Sid  
Liebes  
Bjorn Liencre  
Susan Light  
Daniel Lilienstein  
Elizabeth L Lillard  
John Lilly  
Suzanne Lim  
Daniel Lin  
Edith Lin  
M L Lin  
Patrick Lin  
Raymond Lin  
Sylvia Lin  
Elizabeth Lincoln  
Betty Linden  
Gary Lindgren  
Chris Linn  
Josie Lipkin  
Thomas Lipkis  
Sherry Listgarten  
Karl Littau  
Melanie Liu  
Tony Liu

Eduardo Llach  
Dorothy Lloyd  
Julie Lloyd  
Brian Lo  
Selina Lo  
Juan Loaiza  
James Lobdell  
Terri Lobdell  
Judy Lothead  
Kathryn L Lodato  
Kristen Loew  
Chris Logan  
Julia Logan  
Katrina Logan  
Sharon Long  
Andrea Longini  
Linda Longstreth  
Sarah Longstreth  
Kelly Look  
Judith Lookabill  
Mike Lopez  
Rachel Lotan  
Carolyn Lougee  
Lisa Lovazzano  
Trina Lovercheck  
Diana Lowe  
Ruth Lowy  
Hannah Lu  
Elizabeth Lucchesi  
Gwen Luce  
Kathleen Luchini  
Ander Lucia  
Kenneth Lui  
Linda Lui  
Betty Lum  
Lynda Lumish  
Nora Lundin  
Douglas Lusk  
William Lynch  
Bob Lynne  
Linda Lyon  
Aimee Lysaght  
Jean Lythcott  
The George L Houle  
& Glenna M Houle  
1991 Rev Liv Trust  
Kevin Ma  
Pete Ma  
Mandy Maccalla  
John Macdonald  
Paul Machado  
Lorraine Machello  
Judith Mack  
David & Helen  
Mackenzie  
Shawn Mackenzie  
Duncan Macmillan  
Hugh Macmillan  
Armand Macmurray  
Joe Madrone  
Larry Magid  
Henry Magnuski  
Dan Mahoney  
Ruth Maitless  
Jen Majeti  
Marshall Mak  
Marcia Makino  
Orna Makleff  
Anthony Malizia  
Craig Mallery  
Margaret Maloney  
Richard Mamelok  
Marion B Mandell  
Jo Ann Mandinach  
Carolyn Manning  
Jeni Mao  
Andrew Mar  
Rebecca Marasco  
Jenny March  
Robert Marchetti  
Barry Marchisio  
Alan Marcum  
Miriam Marden  
Sandy Marenberg  
Joe Marguevicius  
Elliot Margolies  
Charlene Margot  
Robert Marinaro  
Sarabeth Marinelli  
Douglas Marinkovich  
Linda Marion  
Patricia Markevitch  
David Markowitz  
James Marks  
Edris Maroff  
Patricia Marriott  
Elizabeth Marshall  
Gloria Marshall  
Thomas Marshallburn  
Beth Martin  
Beverly Martin

Daniel Martin  
Debby Martin  
Nancy Martin  
Thomas Martin  
Vickie Martin  
Amanda & Mark  
Martin & Cairns  
Alice Anne  
Martineau  
Catherine Martineau  
Mary C Martinson  
Stephanie Martinson  
Richard Marty  
James Mason  
William Mason  
Rosa Mass  
Henry Massey  
Carole Massoni  
Catherine Mast  
Diane Master  
Robert Master  
Terrie Masuda  
Richard Mates  
Joan Mather  
Kathy Matice  
David & Carol  
Matson  
Michael Matthews  
Edwin May  
Elizabeth May  
Gina Maya  
Roy Maydan  
Pam Mayerfeld  
Marilyn Mayo  
Juan Mayora  
Edward Mazza  
Frances Mc Vittie  
Wendy Mcadam  
Patricia Mcbrayer  
John & Leona  
McCabe  
Marsh Mccall  
Roderick Mccalley  
Tom Mccalmont  
Margaret Mccaslin  
Karen Mccaul  
Ryan Mccauley  
James Mcclelland  
Kathy Mcclelland  
Robin Mcclish  
Charlie Mcclung  
Joyce Mcclure  
Merele Mcclure  
Jordan Mccolloch  
Susan Mccomas  
Michael Mcconnell  
Lynne Mccord  
Lori Mccormick  
Joan Mccowan  
Jean Mccown  
Pamela Mccroskey  
Brian Mccune  
Maija Mcdonald  
Susan Mcdonald  
Theresa Mcdonald  
James Mcdonnell  
Steve Mccelfresh  
Shannon Mcentee  
Wj Mcfall  
Edwina Mcgannon  
Nancy Mcgaraghan  
Leah MCGarrigle  
Anne Mcgee  
Suzanne MCGill  
Kathie MCGinn  
Maura MCGinn  
Stephany MCGraw  
Pat MCGuire  
Graig Mchendrie  
Lucianne Mcentyre  
Robert Mcentyre  
Margaret Mckee  
Nan Mckenna  
Pam Mckenney  
Virginia Mckim  
Margaret Mckinnon  
Cathy Mclain  
Don Mclaughlin  
Kerny Mclaughlin  
Carla Mcleod  
Mike Mcmahon  
Devin Mcmangani

Kristen Mcmichael  
Wally Mcmillan  
Robert Mcmillen  
Dolores Mcmullen  
Deedee Mcmurtry  
Kathleen Mcnutt-  
Hart  
Tamara Mead  
Susan Meade  
Anna Meegan  
Sharon Meers  
Aranyak Mehta  
Kristin Meier  
Kristian Meisling  
John Mekisich  
Henry Moore  
Jean Moore  
Preston Moore  
Shauny Moore  
Terrence Moore  
Kelli Moors  
Annelise Mora  
Muriel Mora  
Elizabeth Moragne  
Douglas Moran  
J Christopher Moran  
John Moran  
Julia Moran  
David Morandi  
Stephane Moreau  
Booker Morey  
Elizabeth Morgan  
Robert Morgan  
Trish Morgan  
Michael  
Morganstern  
Rev. Amy Zucker  
Morgenstern  
Betsy Morgenthaler  
Laura Mori  
Bruce Morimoto  
Ron Morita  
Patricia Morris  
Kent Morrison  
Mary Julia Morrison  
Oretha Morrison  
Terry Morrow  
Frances Morse  
Alex Meyer  
Elaine Meyer  
Joe Meyers  
Mark Michael  
Ann Michel  
Mary Michel  
Melissa Michelson  
Hal Mickelson  
Eiko Mies  
Shalina Miklos  
Andrew Miksztal  
Theodore Mill  
Bob Millavec  
David Miller  
Elizabeth Miller  
Jason Miller  
Jeffrey Miller  
Mary Miller  
Megan Miller  
Michael J. Miller  
Michele Miller  
Nita Miller  
Susan A Miller  
Barbara Millin  
Jane Millman  
Junco Minami  
Wendy Mines  
Deborah Minowitz  
Maryann Miotto  
Susann Mirabella  
Timothy Misner  
Anita Mitchell  
Carolyn G Mitchell  
Susan Mitchell  
Vibhu Mittal  
Siv Modler  
Amanda Mogin  
Annick Mohageg  
Marshall Mohr  
Amanda Mok  
Sara Moked  
Cathy Moley  
Christopher  
Molumph  
Tina Mondragon  
David Moor  
Diane Moore

Edith Moore  
Jean Moore  
Preston Moore  
Shauny Moore  
Terrence Moore  
Kelli Moors  
Annelise Mora  
Muriel Mora  
Elizabeth Moragne  
Douglas Moran  
J Christopher Moran  
John Moran  
Julia Moran  
David Morandi  
Jim Nessi  
Deborah Newhouse  
Merrill Newman  
Lydia Ng  
Nancy Ng  
Nelson Ng  
Jessie Ngai  
Hang Nguyen  
Nicholas Nguyen  
Thanh Nguyen  
Annyu Ni  
Alison Nichols  
Meagan Nichols  
Nancy Nichols  
Evelyne Nicolau  
Karen Nierenberg  
Susan Nightingale  
Matthew Niksa  
Geoffrey Nilsen  
Blythe Nilsson  
Elsa Nimmo  
Karna Nisewaner  
June Nishimoto  
Judy Nishiyama  
Rakhee Nishtala  
Lisa Nissim  
Lela Noble  
Sharon Noguchi  
Judy Noice  
Marchelle Moten  
Ricardo Motta  
Kathryn Mouton  
Frank Mueller  
Judith Mueller  
Marianne Mueller  
Patricia Mueller-  
Vollmer  
Elizabeth Muir  
Sonya Mukherjee  
Sutapa Mukherjee  
Nora Mullaney  
Patricia Muller  
Stephanie Mulqueen  
Trish Mulvey  
C A Munch  
Siddharth Mundra  
Carmen Munoz  
Jill Munro  
Joe Murad  
Miriam Murase  
Flo Murnane  
Catherine E Murphy  
Sandra Murphy  
Jennifer Mutz  
Deborah Mytels  
Diane Naar  
Spencer Naar  
David Nagle  
Nadia Naik  
Kate Donnellon Nail  
Jared Naimark  
Gayle Nakano  
Nikoo Nazamian  
Sandy Napel  
Nichola Napoleon

Subhash Narang  
Mangla Narayan  
Lisette Narragon  
Sharon Nash  
Mariam Nayiny  
Terry Naylor  
Deborah Neff  
Nancy Neff  
Robert Neff  
Barbara Nelson  
Cynthia Nelson  
Jennifer Nelson  
Walter Nelson  
Mary Nemerov  
Mora Oommen  
David Oppenheimer  
Jim Orenberg  
Shari Ornstein  
Marga Ortigas-  
Wedekind  
John E Ortiz  
Lolly Osborne  
Zoe Osborne  
Joanna Oshman  
Susan Osofsky  
Laurie Ostacher  
Barbara Ostby  
Jill Otto  
Rita Ousterhout  
Bruce Owen  
Susan Owicki  
C P  
Bonnie Packer  
Amado Padilla  
Carlos Page  
Pam Page  
Rachel Paley  
Miriam Palm  
R H Palmer  
Rachel Palmer  
Linda Palmor  
Ken Parekh  
Margaret Park  
Megan Noice  
Kenneth Nolan  
Susan Nolan  
Yvonne Nomizu  
Barbara Noparstak  
Melanie Norall  
Sally Nordlund  
Brian Norimoto  
Lindsey North  
John Northway  
Donna Norton  
Linda Norton  
Mary Ann Norton  
Joseph Noto  
Pamela Noyer  
Rosemary Nurre  
Boyce Nute  
Lucy O'brien  
James O'connell  
Vicki O'day  
Ted O'hanlon  
Jill O'nan  
Sally O'neil  
David O'reilly  
Peter O'riordan  
Dianne Passen  
David Pasta  
Eli Pasternak  
Ragni Pasturel  
Kirsten Patel  
Nirmala Patni  
Melina Patterson  
Rocio Pauck  
Geoff Paulsen  
Jane Paulson  
Linda Paulson  
Rani Pazmino  
Janet R Peacock  
Jayne Pearce  
Barclay Pearson  
Jamie Pearson  
Maegan Pearson  
Sandra Pearson  
Emma Pease  
Sara Peck  
Susan Peck  
Lisa Peckler  
Jonathon Peeps  
Keith Pelczarski  
Helen Pellegrin  
Sue Pelosi

Margo Ogus  
Robert Ohlmann  
Kevin Ohlson  
Joni Okamoto  
Eimi Okano  
Satomi Okazaki  
Daniel Okimoto  
Gretchen Olbrich  
Timothy Oleno  
Stacey Olgado  
Mary Olive  
Anita Olkin  
Alexandra Olsen  
Adam Olshen  
Nancy Peters  
Scott Peters  
Alan Petersen  
Doris Petersen  
Alison Peterson  
Beatrice Peterson  
Carol Peterson  
Isabel Peterson  
Nancy Peterson  
Susan Petit  
Andris Petriceks  
John Petrilla  
Lee Pfab  
James Pflasterer  
Andrew Pflaum  
Joan Phelan  
Kay Phillips  
Bill Phillips  
Cheryl Phillips  
Elizabeth Phillips  
James Phillips  
Meredith Phillips  
Robert Phillips  
Susan Phillips  
Verdere Philpot  
Nan Phinney  
Elizabeth Pianca  
Ben Pickering  
Judy Pickering  
Chris Picozzi  
Carolyn Pierce  
John Pierce  
Robert Pierce  
Roger Pierno  
Dhruv Pilania  
Ryan Pilat  
Nisha Pillai  
Martha Pindar  
Susan Pines  
Donna Pioppi  
Elizabeth Pirrotta  
Carol Pistorino  
Barbara K Pitkin  
Rainer Pitthan  
Lakiba Pittman  
Carol Pladsen-Bloom  
Chris Planessi  
City Of Palo Alto  
Planning  
Harry Plant  
Nancy Player  
Stephen Player  
Hal Plotkin  
Herb Pluemer  
Patricia Plumer  
Allen Podell  
Janet Podell  
Phoenix Podell  
Kristen Podulka  
Andrew Poggio  
Mamie Poggio  
David Pollard  
Jennifer Pollock  
Rich Pompetti  
Loreto Ponce De

Marie Pence  
Thomas Pencek  
Ana Pereira  
Andrew Pergam  
Timothy Perkins  
Sharon Perl  
Ken Perlmutter  
Raymond Perrault  
Frances Perry  
Lisa Peschcke-Koedt  
Vera Pesotchinsky  
Barbara Peters  
Betty Peters  
Jerome Peters  
Leon  
Stephen Pond  
Susie Poon  
G Russell Poore  
Randy Popp  
Grace Popple  
Blair Porteous  
Marta Porwit  
Harold Poskanzer  
Mark Potter  
Genevieve Poulin  
Kathy Poulson  
Paula Powar  
Arjun Prabhu  
Cathy Prabhu  
Marlene Prendergast  
Laura Prentiss  
Theresa Presser  
Jean Pressey  
Evelyn Preston  
Sarah Pribble  
Kitty Price  
Judy Priest  
Karen Prindle  
Christopher Prior  
Richard Probst  
Ann Protter  
Ann And Protter  
Luther Pugh  
Marcia Pugsley  
Sharon Purcell  
Richard Purkey  
Ray Purpur  
Anne Putney  
Gloria Pyszka  
Dan Qu  
Carter Quinby  
Dan Quinn  
Colin Quinton  
Shehrzad Qureshi  
Joan Rabin  
Bob Rader  
Nader Radji  
Abbas Rafii  
John Raffrey  
Jodee Raimondo  
Barb Rains  
Joan Raiter  
Ram Rajagopal  
Helen Rakove  
Sheila Raleigh  
Janaki  
Ramachandran  
Arsella Raman  
Narayanan  
Ramasaamy  
Jennifer Ramberg  
Ella Ramrayka  
Romarys  
S David Ramsey Jr  
Lyle Ramshaw  
Steve Raney  
Tirumala Ranganath  
Lynn Rankin-Esquer  
Bryan Ransil  
Michael Rantz  
Shailo Rao  
Bruce Raskin  
Veronique Rasky  
Steve Rasmussen  
Jane Ratchye  
Elizabeth Ratner  
Erik Rausch  
R D Rausch  
Jo Rawlins Gilbert  
Kathi Rawnsley  
Gordon Ray  
John Rayner  
Hunter Reardon  
Keith Reckdahl  
Suzanne Redfern-  
West  
Andie Reed  
Elena L Reese  
Jeff Reese  
Trudy Reese  
Margaret Reeves  
Roxanne Reeves  
Colin Reid

Leah Reider  
Carol Reilly  
Trudi Reinhardt  
Rob Reis  
Robert And Reklis  
Stephen Reller  
William Reller  
Marina Rimmel  
Karen Remsen  
Pearl Renaker  
Danielle Reneau  
Eddie Retnolds  
Bruce Reyes-Chow  
Joanna Reynolds  
Joyce Reynolds  
Robin Reynolds  
Verne Rice  
Jon Richards  
George Richardson  
Margaret Richardson  
Susie Richardson  
Marian Richart  
Bernard Richter  
Joel Riciputi  
Roberta Riedel  
Barbara Rieder  
Paul Ries  
Gayle Riggs  
Patricia Riley  
Thomas Rindfleisch  
Koon Ring  
Sue Rinsky  
Barbara Ripper  
Mary Ripley  
Gail Rivest  
Catherine Rivlin  
M Robb  
Heather Robbins  
Janet Robbins  
Lynn Roberts  
Mary Roberts  
Rosalea Roberts  
Terry Roberts  
A P Robertson  
Ruth Robertson  
Andrew Robin  
Harriet Robinson  
Kyrie Robinson  
Laurel Robinson  
S Robinson  
William Robinson  
Evangeline Rocha  
Louise Roche  
Richard T Roche  
Myrna Rochester  
Lisa Rocker  
Renee Rodrigue  
Eunice Rodriguez  
Jen Rodriguez  
Carol Rogers  
Patricia Rohrs  
Joe Rolfe  
Mindie Romanowsky  
Elizabeth Ronn  
Caroline Rose  
Deborah Rose  
Amy Rosenberg  
Bonnie Rosenberg  
Claudette Rosenberg  
Deborah Rosenberg  
Steven Rosenberg  
Susan Rosenberg  
Margaret  
Rosenbloom  
Oscar Rosenbloom  
Annmarie  
Rosengreen  
Alan Rosenthal  
Janaki  
Anne Rosenthal  
Cary Rosenzweig  
Ronda Rosner  
Alex Ross  
Annette Ross  
David Ross  
Jaime Ross  
Jc Ross  
Steven Ross  
William Ross  
Zack Ross  
Emilie Roth  
Andrea Rothenberg  
Meredith Rothrock  
Pati Rouzer  
Margaret Row  
Roderick Rowell  
Joan Roy  
Jan Rubens  
Suzanne Rubenstein  
Phillip Rubesin  
Esther Rubin  
Elisabeth Rubinfeld  
Sally-Ann Rudd  
Ingrid Rulifson  
Jeff Rulifson  
Chick Runkel  
Gary & Ruppel  
Jessica Ruppert  
Lena Russel  
Joanne Russell  
Lynne Russell  
Barbara Ryan  
Robert Ryan  
Jane Rytina  
Georges Saab  
Carol Saal

# The future matters.

**SUPPORT LOCAL JOURNALISM**  
DURING OUR FALL MEMBERSHIP DRIVE

Chris Saccheri  
David Sacerdote  
Bonnie Sachs  
John Sack  
Judith Sadoff  
Michal Sadoff  
Massy Safai  
Brad Saffer  
Oliver Saffir  
Scott Sagan  
Sherri Sager  
Heather Sahami  
Stuart Sailer  
Herbert Saito  
Aviva Saitz  
Hideko Sakamoto  
Patty Sakuma  
Thomas Salabert  
Sara Salsbury  
Elizabeth Salzer  
Rachel Samoff  
Dean Samos  
Noel Sanborn  
John Sanchez  
Chet Sandberg  
Becky Sanders  
Gary Sanders  
Marian Sanders  
Sylvia Sanders  
Tc Sanders  
W Ferrell Sanders  
Sarah Sands  
Linda Sanford  
Elizabeth Santana  
Sribalan Santhanam  
Renee Santifaller  
Michael Santullo  
Shuchi Sarkar  
Anjani Sarma  
Lela Sarnat  
Dan Sarouhan  
Susan Sather  
Glen Sato  
Rodney  
Satterthwaite  
Ruth C Satterthwaite  
Ramakrishna  
Satyavolu  
Elaine Sausotte  
Jennie Savage  
M D Savoie  
John Sawka  
Vanessa Sayres  
Lynne Scafe  
John Scandling  
John P Schaeer  
Patti Schaffer  
Susan Schaps  
Marc Schaub  
Susan Scheel  
Vincent Scheib  
Emily Scheinman  
Frank Schellenberg  
Ute Schellenberger  
Laurence E Schemel  
Dieter Scherer  
Joan Scherer  
Judy Schiffer  
Betty Schink  
April Schleck  
Andrea Schloss  
Jan Schlossberg  
Greg Schmid  
Bonnie Schmidt  
Kathryn Schmidt  
Lisa Schmidt  
Anne Schmitt  
Molly Schmitt  
Aileen Schmoller  
David Schmedler  
Carine Schneider  
John Schniedwind  
M. David Schnur  
Hartmann Schoebel  
Richard Schoen  
Todd Schoenberger  
Laurie Schofield  
Rebecca Scholl  
Carol Scholz  
Barbara Schonborn  
Cynthia Schramm  
Karen Schreiber  
Monica Schreiber  
David Schroeder  
Jeffrey Schultz  
Charles Schulz  
John Schwabacher  
Andrew Schwartz  
David Schwartz  
Jodi Schwartz  
Judith Schwartz  
Leslie Schwartz  
Paula Schwartz  
Rick Schwartz  
Jerald Schwarz  
Heidi Schwenk  
Susan Schwerdfeger  
Liz Schwerer  
Andrew Scott  
Carol Scott  
Kandis Scott  
Amy Scrivner  
Douglas Scrivner  
Grady Seale  
Paul Seaver

Darla Secor  
Jonathan Seder  
Adam Seeger  
Glen Segal  
Jonathan Segal  
Joan Segall  
Allan Seid  
Craig Seidel  
Marva L Seidl  
Rande Seiger  
Linda Selden  
Margaret Seligson  
Yara Sellin  
Herbert Seltzer  
Howard L Selznick  
Anne Senti-Willis  
Julie Sevastopoulos  
Robin Severns  
John Seyfarth  
Rita Seymour  
Vera Shadle  
Kara Shafer  
Prince Shah  
Christine Shambora  
Geetha Shankar  
Tom Shannon  
Sandy Shapero  
Skip & Barbara  
Shapiro  
Jim Sharp  
Jim Shaw  
David Shaw  
James Shaw  
Kori Shaw  
Robert Shaw  
Carolyn Shea  
Tracy Shedroff  
Joyce Sheffren  
Martin Shell  
Laurie Shelton  
John Shenk  
Elizabeth Shepard  
Rosalie Shepherd  
Nipa Sheth  
Matthew Sheu  
Steven Shevick  
Grace Shieh  
Dov Shiffman  
Edward Shikada  
William Shilstone  
A Shimakawa  
John Shirk  
Evan Shiue  
Jeffrey L Shore  
Lois Shore  
Stan Shore  
James M Shorin  
Susan Schaps  
Helen Short  
Linda Shortliffe  
Ted Shortliffe  
Kate Shoven  
Joanna R Shreve  
Terry Shuchat  
Marion Shuey  
Karen Shuler  
Mark Shull  
Gail Shulman  
Alexandra  
Schwarzstein  
Richard Sibley  
Corrie Sid  
Judie Siddall  
Trish Siddens  
Bonnie Siegel  
Mona Siegel  
Winnie Siegel  
Virginia Siegman  
Sandra Siegmund  
Charles Sieloff  
Caroline Sigman  
Diane Sikic  
Gloria Sikora  
Leonore Silberman  
Ilze Silis  
Elizabeth Silva  
Jennifer Silva  
Cara Silver  
Gerald Silverberg  
Heather Silverman  
Joe Simitian  
S Joseph Simitian  
Patricia Simko  
Sheri Simmons  
Joy Simoes  
Deborah Simon  
Julia Simon  
Richard A. Simpson  
Julian Sinai  
Monika Singh  
Louise Singleton  
Anoop Sinha  
Wendy Sinton  
Margaret Sitko  
Minda Sizto  
Lynette Skelton  
Glenn Skinner  
Arthur Sklaroff  
Madeleine Skoog  
Gary Skrabutenas  
Karl Sonkin  
Juliana Sonneveld  
Cherie Sopkin  
Trine Sorensen  
Sophy Sorensen  
Ilene Sotnick  
Barbara Sourkes

Elizabeth Sloss  
Kendra Smaby  
Arthur Small  
Suzanne Small  
Richard Smallwood  
Virginia Smedberg  
Michael Smirnov  
Alice Smith  
Andrea Smith  
Barry Smith  
Boyd Smith  
Charles Smith  
Cliff Smith  
Ellen Smith  
Eric Smith  
Jeanie Smith  
Jeny Smith  
Kaloma Smith  
Kristin Smith  
Kristina Smith  
Lauren Smith  
Lora Smith  
Robert L Smith  
Roger Smith

Frances Souza  
Julie Spengler  
Joanne Sperans  
Daniel Spiegelman  
Andrea Spira  
Joshua Spira  
Judith Spirn  
Katja Sprackelmeyer  
Barbara Spreng  
Susan Springer  
Srikar Srinath  
Srija Srinivasan  
Janet St Peter  
Christine Stafford  
Kellie Stafford  
Mary Stahl  
Shannon Stahl  
Debra Staiger  
WorldLife Office  
Stanford University  
Linda A Stanley  
Sylvia Stanley  
Susan Stansbury  
Carol Starbuck

Richard Stolee  
Felice Stonestrom  
Kaye Storm  
Lennie Stovel  
Richard Stovel  
Mark Stoye  
Marilyn Stratz  
Aaron Strauch  
Bonnie Street  
Sharan Street  
Rod Strickland  
Nanette Stringer  
Leilani Stritter  
Myra Strober  
Robert Strohecker  
Roger Strom  
Ellen Stromberg  
Kirsten Struve  
Gail Stucky  
Julia Sturm  
Elizabeth Su  
Jeffrey Su  
Alfred Sugarman  
Sachiyo Sugimoto

Andrea Tanemura  
John Tang  
Peter Tanner  
H P Tao  
Eric Taser  
Michael Tashker  
Dale Tatum  
Juddson Taube  
Anne Taylor  
Christine Taylor  
Gail Taylor  
Jennifer Taylor  
Paul Taylor  
Richard Taylor  
Sandra Taylor  
Susan Taylor  
Star Teachout  
Christy Telch  
Mark Temme  
Cari Templeton  
Rebecca Tenanes  
Kimm Terpening  
David Terrell  
Robert Tersini

Leslie Tincher  
Veronica Tincher  
James Ting  
Jerry Tinney  
Barbara Tisdale  
Jason Titus  
Steven Tjiang  
Robin Tobias  
Kathryn Todd  
Laszlo Tokes  
David Tom  
Sally Tomlinson  
Timothy Tomlinson  
Lucy Tompkin  
Robert Tompkins  
Julie Tomz  
Lynne Toribara  
Mary Lou Torre  
Christopher Torres  
Melissa Toteda  
Aleksandar Totic  
Linda Toy  
Hugo Traeger  
Mary Beth Train

Lei Tung  
Palo Tung  
Myron Turbow  
Callie Turk  
Gregory Turnbull  
Andrea Turner  
James Turner  
Stephen Turner  
Jana Tuschman  
Christine Twichell  
Kathleen Twomey  
Greg Unangst  
Gerald Underal  
Walter Underwood  
Maile Uohara  
Joan Urquhart  
Susan Usman  
Linda Uyechi  
Carol Uyeno  
Neil Vachharajani  
Cammie Vail  
Vaibhav Vaish  
Badru Valani  
Yael Valek

Antonia Wang  
David Wang  
Ellen Wang  
Grace Wang  
Howard Wang  
Jennifer Wang  
John Wang  
Karen Wang  
Kd Wang  
Laurence Wang  
Nancy Wang  
Roy Wang  
Stephanie Wansek  
Susan Warble  
Al Ward  
Rebecca Ward  
Roger Warnke  
Judy Botsford  
Warren  
Mark Warren  
Leisa Waschura  
Marvin Washington  
Tom Wasow  
Judith Wasserman

Marlene Wine  
Drew Wingard  
Susan+Bright Winn  
Laurie Winslow  
Jeffrey Wise  
Julie Wissink  
Susan Witebsky  
Ursula Witte Cooney  
Andrea Wolf  
Elizabeth B Wolf  
Laura Wolfe  
Valerie Wolk  
Allison Wong  
Geoffrey Wong  
Jeffrey Wong  
Sherwin Wong  
Stanley Wong  
Yang Wong  
Allen Wood  
Bobbie Wood  
Kingsley Wood  
Susan Wood  
David Woodbury  
Sara Woodham  
Douglas Woodman  
Jane Woodward  
Christine Min  
Wotipka  
Jean Wren  
Joan Wrenn  
Gavin Wright  
Laura Wright  
Susan A Wright  
Bo Wu  
Catherine Wu  
Irene Wu  
Lili Wu  
Seth Wu  
Thomas Wuttke  
Keith Wycoff  
Dovie Wylie  
Roger Wyman  
Garry Wyndham  
Robert Wynne  
Zeqing Xia  
Michael Xie  
Yumei Xiong  
Ann Xu  
Nancy Yamada  
Ralph Yamasaki  
Carl Yanari  
Larry Yang  
Qiang Yang  
Suya Yang  
Zhihong Yang  
Richard Yankwich  
Kerry Yarkin  
Neva Yarkin  
Jean Yates  
Rosenna Yau  
William Yeager  
Cathleen Yedinak  
A Yiaway Yeh  
John Yen  
Sally Yencken  
Richard Yep  
Lew Yobs  
Germaine  
Yokoyama-Heiligler  
Yuichi Yoshimoto  
Jeffrey Yost  
James Young  
John Young  
Jon Young  
Vivie Young  
Lisa Young  
Hallenbeck  
John William Young  
Jr  
James Younkin  
Julia Yu  
Berdine Yuan  
Erhyu Yuan  
Jennifer Yuan  
Benjamin Zabik  
Kate Zablocki  
Marina Zago  
Kelly Zalatimo  
Dan Zalles  
Susan Zare  
Amy Zegart  
Amanda Zeitlin  
Yangbo Zhu  
David Ziegler  
Dionne Zijlstra  
Barbara Zimmer  
Mitchell Zimmerman  
Scottie Zimmerman  
Pete Zivkov  
Caroline Zlotnick  
Irwin Zook  
Yao Zou  
Aryela Lee Zulman  
Landen Zumwalt  
John Zussman  
Joan Zwiep  
Judith Zyroff

# Together we can save community journalism and support local nonprofits.

We need your help to sustain our  
award-winning journalism.

But, we also know there are many nonprofits  
in our area that also need our support.

This is why we've pledged to **donate 10% of  
your membership dues to our Holiday Fund**  
when you **sign up for a Basic, Plus or Premium**  
**Annual Membership before November 11.**



**JOIN NOW AT**

[PaloAltoOnline.com/subscribe/](https://PaloAltoOnline.com/subscribe/)

Sandra Smith  
Sherri Smith  
Stephen Smith  
Wayne Smith  
Wayne Smith  
Jean Snider  
Karen Snow  
Jeanese Snyder  
Tammy Snyder  
Mari Soberg  
Marian Sofaer  
Stuart Soffer  
Deborah Soglin  
Marcy Sohn  
Mark Solloway  
Mike Solomon  
Susan Solomon  
Mark Solomons  
Monal Sonecha  
Sandy Songy  
Sonam Soni  
Karl Sonkin  
Juliana Sonneveld  
Cherie Sopkin  
Trine Sorensen  
Sophy Sorensen  
Ilene Sotnick  
Barbara Sourkes

Suanne Starner  
Art Stauffer  
Michael Stauffer  
Pat Steck  
Brian Steen  
Laura M Stefanski  
Deborah Stegman  
Elliot & Karen Stein  
Heidi Stein  
Nancy Steinbach  
Bruce Steinback  
Judith Steinhart  
Nathaniel Sterling  
Andrea Stern  
Harriet Stern  
Heidi Stern  
Rick Stern  
Daniel Sternbergh  
Andrew Stewart  
Anne Stewart  
Dana Stewart  
Gabriel Stewart  
Georgia E Stewart  
Deborah Stinchfield  
James Stinger  
Valerie Stinson  
Christopher Stirrat

Nancy Sullivan  
Doria Summa  
Cameron Sunde  
Lakshmi Sunder  
Brenda Sunseri  
Sally Supplee  
Stanley Sussman  
Irene Suzuki  
James Swan  
Jan Swan  
Garret Swart  
Lenita Swedenborg  
Scott Sweet  
Kimberly Sweidy  
Richard Swent  
Ann Swinehart  
Lina T Swisher  
Mary Sylvester  
Stella Sze  
Mindy Szutu  
T T  
Nancy Tadlock  
Nazli Taghizadeh  
Duane Takahashi  
Meredith Tan  
Michael Tan  
Hiroshi Tanaka

Audrey Thagard  
Rebecca Thal  
Alexander Thayer  
Theodore Thayer  
Radhika Thekkath  
Sven Thesen  
Dana Thomas  
Eugene Thomas  
Jack Thomas  
Jeannie Thomas  
Linda Thomas  
Melinda Thomas  
Nancy Thomas  
Susan Thomas  
Charles Thompson  
Chery Thompson  
Gail Thompson  
Jean Thompson  
Kevin Thompson  
Carl Thomsen  
Susan Thomsen  
Eric Thomson  
Jan Thomson  
M Thorp  
Cristina Thorson  
Michael Tierney  
Soham Tikekar

Preeva Tramiel  
Deborah Tranowski  
Cindy Traum  
John Treiehler  
Anne Trela  
Olivia Treynor  
Steve Tripp  
Christie Trott  
David Trounce  
Miroslav Trubelja  
Tammy Truher  
Elizabeth Trumbull  
Jade Trust  
Kelly Tsai  
Julie Tsang  
Gabriel Tsao  
Anissa Tse  
Ken Tsuboi  
Peter Tsui  
Samson Tu  
Lynn Tubera  
Carolyn Tucher  
Nancy Tuck  
Gretchen Tucker  
Kenneth Tucker  
Daniel Tuerk  
Samir Tuma

Luis Valente  
Terri Valenti  
Paul Valentine  
Joan Van  
Joann Van Atta  
Kort Van Bronkhorst  
Virginia Van Kuran  
Steffen Van  
Schewick  
Carl Van Wey  
Lorna Vander Ploeg  
Ellen Vanderwilt  
Richard Vandivier  
Janet Vanides  
Maricela Varma  
Elizabeth Varner  
Jane Varner  
Matt Vaska  
Ingrid Velasquez  
Maya Venkatraman  
Linda Verhulp  
Sunita Verma  
Anne Vermeil  
Chiara Vernari  
Teri Vershel  
Eric Verwillow  
Kathryn Verwillow  
Ilya Veygman  
June Vilen  
Kellie Villannueva  
Olenka Villarreal  
Mary Vincent  
Tida Violante  
Daniel Virtheim  
Judd Volino  
Jane Volpe  
Sandy Voorhees  
June Voorsanger  
Rita Vrhel  
Hongha Vuong  
C W  
Wyn Wachhorst  
Christopher Wachlin  
Alan Wachtel  
Elizabeth Wadleigh  
Kimberly Wadycki  
Steve Wagman  
Keri Wagner  
Pamela Wagner  
Robert Wagoner  
Sean Wagstaff  
Gregory Wait  
Diane Walker  
Kevin Walker  
Tisa Walker  
Wanda Walker  
Jim Wall  
Barbara Wallace  
Josh Wallace  
Rick Wallace  
R Nan Waller  
Christine Walravens  
Daria Walsh  
Kathy Walsh  
Richard Walston  
Diane Walter  
Drew Wanderman  
Alexander Wang

Jennifer Wasson  
Sterling Watson  
William Watson  
Stefanie Wauk  
James A Weaver  
Richard Weaver  
Terri Weber  
Marjorie Wechsler  
Gretchen Wehrle  
Curt Weil  
Lawrence Wein  
Elizabeth  
Weingarten  
Alan D Weinstein  
Barbara Weinstein  
Deborah Weinstein  
Jeremy Weinstein  
Len Weisberg  
Edith Weiser  
Mark Weiss  
Ann & Irv Weissman  
Jeff Weitzman  
Gregory Welch  
Sue Welch  
Lisa Wells  
Holly Welstein  
Maryanne Welton  
Amy Wender  
Gayla Weng  
Robert Wenzlau  
Valri Wessenberg  
Barlow M Westcott  
Carolyn Westgaard  
Patrik Westin  
Deborah Wexler  
Lewis Wexler  
J Whaley  
Jay Whaley  
Jackie & Ralph  
Wheeler  
Eugene Wheelock  
Daniel White  
Rebecca White  
Ellen Whitmore  
Tom Whitnah  
Deborah Whitson  
Wally Whittier  
Linnea Wickstrom  
Vivian Widman  
Sarah Wiecekowski  
Lynn Wiese  
Stefanie Wilen  
Ronald Wilensky  
Eleanor Willemsen  
Cecilia Willer  
Carolyn Williams  
Charles Williams  
Denise Williams  
Gary Williams  
Lauren Williams  
Lindat Williams  
Marilyn Williams  
Monica Williams  
Tracy Williams  
Joan Willingham  
Sigal Wilnai  
Bryan Wilson  
George Wilson  
Geri Martin Wilson  
Joan Wilson  
John Wilson  
Katherine Wilson  
Mark Wilson  
Sandra Wilson  
Sharifa Wilson  
Susan Wilson



## Churchill

(continued from page 5)

parts of the city, most notably the University South neighborhood, while taking away Southgate's main route east across the tracks.

"Closure doesn't even begin to meet one of grade separation's primary objectives, to increase east-west connectivity to all modes of traffic," Newman, who spoke for a group of residents, told the council during a Monday night public hearing on the Churchill Avenue grade crossing. "It doesn't even begin to live up to the dream of connecting Palo Alto."

She was hardly alone. Inder Monga, who lives close to Embarcadero, emphasized the heavy use that Embarcadero already gets from visitors to Stanford University, Town & Country Village and Palo Alto High School.

"Given its role, it's impossible for me to believe that shutting down an intersection nearby and redirecting cars going to Paly to Embarcadero will be resolved by mitigation. ... This will not only increase traffic on Embarcadero

and gridlock but in neighborhoods adjacent to Embarcadero to unreasonable and unsustainable levels," said Monga, who also spoke for a group of residents.

The Monday hearing did not bring the council any closer to its objective of choosing a preferred option for the Churchill rail crossing. With public testimony stretching well past 11 p.m., the council unanimously agreed to defer its own discussion of "grade separation" — an effort to redesign rail crossings so that roads and tracks no longer intersect — until Nov. 15.

The hearing clearly demonstrated, however, that whatever option the city chooses will have to overcome significant opposition. Both the viaduct and the partial underpass have been criticized by XCAP for their visual impact and have been soundly rejected by residents who live next to the tracks. The group's final report, which was issued in March, notes that residents who own houses with their backyard adjacent to the train tracks "will experience a structure with a train running on it over 40 feet in the air."

"Because of the width of the



The proposed closure of Churchill Avenue near the rail crossing in Palo Alto includes an underpass for bicyclists and pedestrians.

rail corridor near Churchill, the viaduct would be constructed only a few feet from property lines, increasing the impact on the nearby properties," the report states.

The group's six-member majority also concluded that the partial underpass, which would depress Churchill west of the rail tracks and allow drivers to turn left or right onto Alma, is "an expensive alternative that is unlikely to be

improved with additional design iteration." The report notes that the underpass would create a "concrete structure whose roadways are more complicated than a simple underpass, due to a design that preserves some of its turns and not others."

The closure of Churchill was the only alternative that mustered majority support of XCAP, which failed to reach consensus on any

of the design options for the two other rail crossings it was charged with evaluating: Meadow Drive and Charleston Road.

Gregory Brail, a member of XCAP who voted in favor of Churchill's closure, called the alternative "an excellent option that would be an exemplary experience for those people who cross the tracks."

Several residents agreed and lobbied the council to support XCAP's recommendation. Churchill Avenue resident Jason Stinson alluded to reports from the city's traffic consultant, which suggested that the various road modifications and traffic signals that are proposed as part of the closure would mitigate its traffic impacts.

"We continue to hear from many people in the community about increased traffic congestion, but that's mostly based on their own residential observations and anecdotes," Jason Stinson said. "The actual data doesn't support that." ■

Email Staff Writer Gennady Sheyner at [gshyner@paweekly.com](mailto:gshyner@paweekly.com).

## Cubberley

(continued from page 5)

Both the city and school district operate programs on the site, with the city leasing land from the district to run a community center on the property. Adjacent to Cubberley is Greendell, which the district owns.

The future of Cubberley, whose buildings have fallen into disrepair, has long been a source of public debate and disagreement. The city has expressed interest in jointly redeveloping the property to include a new community center, potential school and even housing, while the district has said it wants to retain enough land so that eventually constructing a new school on the site remains feasible.

### Temporary campus at Cubberley rankles parents

In the short term, Palo Alto Unified plans to use parts of Cubberley and Greendell as a temporary campus while Palo Verde and

Hoover are renovated. The plan is for Palo Verde to move to the site next school year, with Hoover there for the two following years.

The timeline will require the district to move quickly and some parents have objected to the board not seeking their input before going ahead with the project.

"Obviously, I'm deeply concerned by the way this rushed decision was made unilaterally by the board with very little if any community involvement, aside from the procedural mechanisms," parent Niels Melius said at Tuesday's meeting.

He added that the board's initial discussion about relocating Palo Verde was functionally a "minor footnote" on the agenda for the Oct. 19 meeting, when the board considered various facility plans as part of a single agenda item.

"Making this move and voting on it by the board before you had received any community feedback in any forum that was open to the Palo Verde community is absurd,"

parent Tamara Gracon said. "All of the parents at the school are livid, quite honestly."

Of particular concern to parents was the idea of having students take their classes in a parking lot. The current layout would involve putting portable buildings in a parking lot on the site for fourth and fifth graders to use. Kindergartners through third graders would have their classes in existing portable and traditional classrooms at Greendell.

To make room for the temporary school site, the district's adult education program would move from Greendell to buildings at Cubberley, and other district programs that are currently at Greendell, such as the transitional kindergarten program, would be consolidated into fewer rooms.

Board members acknowledged that moving Palo Verde and Hoover to Cubberley during campus construction would cause disruptions for families, but nonetheless voted 5-0 to approve

designing the temporary school site, which is expected to cost \$350,000, paid for with the district's 2018 Measure Z bond. The total cost of the temporary campus project is expected to be \$2.3 million, although that could change once the design is finalized.

Board member Jesse Ladomirak said that families were correct to say the decision to relocate Palo Verde was made "quickly and without community input," and said that she believes Palo Verde families should be involved in discussions about how to mitigate the impacts of the move.

"The time constraints meant that this decision was made quickly before most people even knew it was being considered," Ladomirak said. "I get it. I understand why people feel blindsided."

At the same time, she said the decision to move Palo Verde needed to be made by experts, adding that the district's team has the experience and granular knowledge of the project to weigh why it's the right decision.

At the Oct. 19 board meeting, Director of Facilities and Construction Eric Holm told the board that by moving students off of Palo Verde's campus during construction, the project would take one school year, rather than two and a half.

Board member Todd Collins expressed displeasure at the Nov. 2 meeting with the way that the plans to use Cubberley as a temporary campus have transpired.

"The rushed process and the lack of community input was disappointing," Collins said. "It's not typical of the way we've made decisions in the past."

### Other board decisions about Cubberley

Board members on Nov. 2 also voted unanimously to approve de-

signing Hoover's new permanent campus. The district intends to demolish the existing buildings at Hoover and then reconfigure and redesign the campus. The total project is expected to cost \$73 million and to be completed during the 2022-2023 and 2023-2024 school years.

As part of the same vote to move ahead with Hoover's rebuild, the board also approved revising its long-term goals for Cubberley. The board is now explicitly prioritizing retention of at least 20 acres of the land for a potential future school site and removing previous goals that called for moving the district office to Cubberley and building staff housing on the land.

The board did not discuss the Hoover redesign and Cubberley site goals at Tuesday's meeting, except to take the formal vote. The discussion took place at the prior Oct. 19 meeting, at which board members supported both projects.

Although the district wants to retain at least 20 acres for a future school, any actual plans about what to build there are still likely decades away, board and administrators have said. The remaining land that the district owns could now potentially be transferred to the city for use as a future community center, although no formal plans have been announced.

The board also heard plans Tuesday to spend roughly \$200,000 in Measure A funds to do infrastructure repairs to Cubberley's existing buildings. These include fixing power issues and repaving a courtyard that has been disrupted by tree roots. The board is expected to take a formal vote on the work at a future meeting. ■

Email Staff Writer Zoe Morgan at [zmorgan@paweekly.com](mailto:zmorgan@paweekly.com).



# YOUR NEW HOME AWAITS

280 OAK GROVE AVE  
ATHERTON



\$5,988,000 | 5 Bd | 5 Bth  
www.280OakGrove.com

99 OAK HAVEN WAY  
WOODSIDE



\$4,488,000 | 4 Bd | 3.5 Bth  
www.99OakHaven.com

812 LOS ROBLES AVE  
PALO ALTO



\$3,488,000 | 6 Bd | 4 Bth  
www.812LosRobles.com

1360 CLOUD AVENUE  
MENLO PARK



\$3,100,000 | 4 Bd | 3 Bth  
www.1360Cloud.com

935 COLLEGE AVENUE  
MENLO PARK



\$3,498,000 | 4 Bd | 2.5 Bth  
www.935College.com

97 RIDGE VIEW DR  
ATHERTON



\$13,488,000 | 6 Bd | 7.5 Bth  
www.97RidgeViewDr.com

2415 SHARON OAKS DR  
MENLO PARK



\$2,050,000 | 3 Bd | 2.5 Bth  
www.2415SharonOaks.com

1251 COLLEGE AVENUE  
PALO ALTO



\$5,498,000 | 5 Bd | 4.5 Bth  
www.1251College.com

1420 UNIVERSITY AVENUE  
PALO ALTO



\$8,988,000 | 6 Bd | 7.5 Bth  
www.1420University.com

51 CRESCENT DR  
PALO ALTO



\$14,500,000 | 5 Bd | 8 Bth  
www.51Crescent.com

835 WESTRIDGE DRIVE  
PORTOLA VALLEY



\$9,988,000 | 5 Bd | 7.5 Bth  
www.835Westridge.com

303 ATHERTON AVE  
ATHERTON



\$19,988,000 | 7 Bd | 8.5 Bth  
www.303AthertonAve.com

147 PATRICIA DRIVE  
ATHERTON



\$17,988,000 | 5 Bd | 7 Bth  
www.147Patricia.com

199 MAPACHE DRIVE  
PORTOLA VALLEY



\$14,988,000 | 5 Bd | 6.5 Bth  
www.199Mapache.com

96 HEATHER DRIVE  
ATHERTON



\$13,488,000 | 8 Bd | 12 Bth  
www.96HeahterDR.com

97 SANTIAGO AVENUE  
ATHERTON



\$9,788,000 | 1.43 Acre Lot  
www.97Santiago.com

## PROUDLY SERVING SILICON VALLEY

Managing Broker: Michael Repka, DRE #01854880 | DeLeon Realty, DRE #01903224



96 HEATHER DRIVE  
ATHERTON



## MAGNIFICENT LINDENWOOD ESTATE ON NEARLY AN ACRE

Private, gated grounds of nearly an acre envelop this majestic Lindenwood estate overflowing with impeccable details and opulent comforts. Evoking the feel of a five-star Tuscan resort, this grandiose residence enjoys several high-end appointments that wrap you in luxury from the moment you step inside, with elegant, grand-scale spaces offering ideal venues for either entertaining or extraordinary everyday living. Nearly 14,700 square feet of space includes a gourmet kitchen, a theater with 8 luxury recliner seats, and a fitness center with an adjacent recovery room featuring a sunken spa and sauna, plus a 2,000+ bottle wine cellar, pool house, and an oversized 6-car garage perfect for auto enthusiasts. Sanctuary awaits in the 8 extravagant bedrooms highlighted by the primary suite with a custom-built, Roman-style tub/shower as well as two massive walk-in closets. Plus, nearly all of the bedrooms offer a full en suite bathroom, and one bedroom easily converts into stylish office space. Incredible grounds offer seemingly endless options for outdoor enjoyment with a vast lawn, a saltwater pool with separate spa, a vineyard terrace, and an outdoor kitchen. And this incredible location is just moments to downtown Menlo Park, downtown Palo Alto, Stanford University, and top private institutions including Sacred Heart and Menlo School.

**BY APPOINTMENT ONLY**

[www.96HeatherDR.com](http://www.96HeatherDR.com)

Offered at \$13,488,000

Listed by the DeLeon Team • 2.5% Commission Paid to Buyer's Agent • Waived if DeLeon Buyer's Agent

Michael Repka, DRE #01854880 | 650.900.7000 | [michael@deleonrealty.com](mailto:michael@deleonrealty.com)

中文諮詢請聯繫 Audrey Sun, DRE #01933274 電話: 650.785.5822 | [www.deleonrealty.com](http://www.deleonrealty.com) | DeLeon Realty, Inc. | DRE #01903224



1251 COLLEGE AVENUE  
PALO ALTO



## BRAND-NEW CONSTRUCTION WITH A CONVENIENT LOCATION

Clean, modern lines and a floorplan perfect for the Silicon Valley lifestyle of today highlight this newly constructed home created by Tektive Design. Soaring ceilings and tremendous natural light offer a breezy sense of openness from the moment you step inside, as beautiful wide-plank oak floors extend throughout nearly 3,700 square feet of living space filled with open gathering areas scaled for entertaining. A focal-point fireplace in floor-to-ceiling textured tile centers the living room, the chef's kitchen enjoys top-of-the-line appliances from Wolf, Bosch, and Sub-Zero, and the downstairs level includes a wet bar and offers space for a game room, wine room, and a convenient Zoom office. Arranged over three levels, the home's 5 bedrooms and 4.5 bathrooms offer comfortable accommodations for family and friends, highlighted by the expansive primary suite, and the convenient guest suite. And for indoor/outdoor living, the peaceful backyard provides a sizable patio, lush lawn, and trees lining the perimeter. Just moments to the great shops and restaurants along California Avenue, this home is also minutes away from Stanford University, a short drive to University Avenue, and blocks from top-ranked Escondido Elementary.

**SCHEDULE YOUR TOUR TODAY!**

[www.1251College.com](http://www.1251College.com)

Offered at \$5,498,000

Listed by the DeLeon Team • 2.5% Commission Paid to Buyer's Agent • Waived if DeLeon Buyer's Agent

Michael Repka, DRE #01854880 | 650.900.7000 | michael@deleonrealty.com  
Alexandra Wilbur, DRE #01926475 | 650.459.3888 | alex@deleonrealty.com | DeLeon Realty, Inc. | DRE #01903224

## Long-term COVID

(continued from page 8)

have breathing problems and cognitive dysfunction, but organs are often also affected, Block said. Physicians should first rule out other diseases with similar symptoms, such as cancer or hypothyroidism, before making a long COVID-19 diagnosis, he added.

Long COVID-19 mainly affects those who have been hospitalized. People with obesity or who had five or more symptoms during their initial infection have a higher risk of developing long COVID-19, said Dr. Hector Fabio Bonilla, Stanford Hospital and Clinics clinical associate professor of infectious diseases who also practices at the Post-COVID-19 Syndrome Clinic.

But long COVID-19 can affect people who experienced mild COVID-19 symptoms. Patients also can completely recover and then symptoms of long COVID-19 will later appear.

People ages 25 to 50 and women are most likely to have long-term complications from the virus, the researchers said. Many young people who have developed long COVID-19 were presumed to have underlying conditions such as diabetes or asthma, but that hasn't turned out to be the case, Bonilla said.

Studies have found that long COVID-19 has affected the healthy population. Research on Italian and German soccer players, a normally robust group, found their performance declined in soccer games if they previously had COVID-19, he said.

### Developing strategies for care

The researchers said they are particularly concerned about younger populations, including children, who develop long COVID-19. Whether it will affect their learning abilities through life and capacity to hold down jobs remains unknown. It will take five years to even start see-

ing how it affects young people in high school and college and the next generation of workers, Bonilla said.

Currently, about 20% of patients have long-term COVID-19.

"They're struggling to go back to work, to school and to complete tasks in the home," said Emily Hough, a Harkness fellow in health care policy and practice at the Commonwealth Fund. Policymakers and the medical profession will need to figure out how to make a support system for those people on a local and national level, she said.

With 125 million people in the U.S. having been infected with COVID-19, the number of people who could potentially be coping with long-term COVID-19 in this country is staggering: 15 million to 25 million people, Block said.

"Tens of millions of people are at risk for this. We don't have the multidisciplinary teams that can be needed," he added.

Santa Clara County Executive Jeff Smith, a physician, said the

county is looking at developing a clinic to specifically address long COVID-19.

The medical profession also needs to develop criteria to help physicians identify long COVID-19 cases and how they can be treated, Bonilla and Block said. Some patients are having their symptoms dismissed, and many physicians don't yet understand the syndrome.

A survey of Santa Clara Valley Medical Center physicians found that only 5% of respondents had made referrals for suspected long COVID-19, and most of those were for pulmonary issues, said Dr. Angela Suarez, medical director of primary care.

Because long COVID-19 can affect multiple parts of the body, multidisciplinary teams will be necessary to address the physical and other symptoms, such as a patient's cognition, mood and well-being. It's important for patients to see clinicians they trust and with whom they have a relationship. Having a therapist work

with doctors can help address symptoms, Block added.

The medical profession has not yet developed criteria for diagnosing long COVID-19. Its complexity has made it difficult to understand. Santa Clara Valley Medical Center has only recently added a diagnostic code for long-term COVID, said Dr. Supriya Narasimhan, chief of the infectious diseases division.

Early treatments with steroids, monoclonal antibodies and, if it is federally approved, the Merck oral medication, can reduce the inflammatory response that causes severe COVID-19 and the risks of long COVID-19, Narasimhan said.

The best strategy for preventing long COVID-19 is to not get COVID-19 at all, she said. The best way to prevent COVID-19 infection is to get vaccinated. Getting vaccinated can prevent 50% of long COVID-19 cases, she said. ■

Email Staff Writer Sue Dremann at [sdremann@paweekly.com](mailto:sdremann@paweekly.com).

## Mary Budrow Granholm

March 13, 1924 – September 30, 2021

Mary Budrow Granholm passed away peacefully on September 30, 2021, in Los Altos, California after a long struggle with Alzheimer's disease. Born in 1924 in Easton, Maine to Raymond George Budrow and Maude Watson Budrow, Mary was their last surviving child, preceded in death by siblings Charles Budrow, Joseph Budrow, George Budrow, Gladys Langstaff, and Thelma Dionne. Mary enjoyed 53 wonderful years of marriage with her husband, Donald Granholm, who passed away in 2013.

Mary grew up in Skowhegan, Maine, graduating from Skowhegan High School in 1942 and from the University of Maine, Orono, where she earned her bachelor's in education in 1946. She began her career as an elementary teacher in the Northeast, but after the tragic early death of her first husband, Floyd Rowe, she followed her sister Gladys to sunny California. She loved her work there, teaching 4th and 5th graders at Garfield Elementary School in Redwood City, California, for most of her 40-year career.

For almost 60 years, the First Baptist Church of Palo Alto was the center of Mary and Don's life, where they formed a vital part of the community until the church sadly closed its doors in 2019. They met in the church and were married there in 1960. Among many other roles, Mary was known as the "Banquet CEO" as she efficiently organized and carried out, with an able team of church friends, the serving of fellowship meals on countless occasions.

Mary and Don embodied a shared passion for world peace and justice by opening their home to international guests, and by extensive travels focusing on education and person-to-person contacts. After a year hosting Ethiopian student Eabisa Guteta in the 1960s,

they provided transitional housing to incoming international Stanford University students for many years, forming many long-lasting global friendships. Their travels touched all continents but Antarctica and hundreds of individual lives.

Mary actively supported the United Nations Association, Midpeninsula chapter, earning acclaim in her role as President. She lent a hand to the UNA Gift Shop and UNA Film Festival and directly assisted student groups in international ventures promoting harmony throughout the world. Mary was active in the American Association of University Women and co-founded the Ecumenical Hunger Program in East Palo Alto, California.

Mary and Don's home was always lively, the table full of family and friends from near and far enjoying Mary's wonderful cuisine, their warm hospitality, and their love of open discussion, as in the Great Decisions forums they often led.

Among Don's family, Mary is survived by sons Stephen Granholm (Holly McCulloch) of Albany, California and Dean Granholm (Evelia Penelope Rux) of Conroe, Texas; grandchildren Lisa Doornik (Jason), Cory Granholm (Megan), Joel Granholm, and Julia Granholm Chapman (Seth); and six great-grandchildren. Among the Budrow and Rowe families, she is survived by generations of nieces and nephews.

All are invited to share memorial stories and photos of Mary at Mary Budrow Granholm, (1924 – 2021) - [ForeverMissed.com](https://www.ForeverMissed.com) Online Memorials.

Memorial gifts in Mary's name are welcome at the United Nations Association Gift Shop (<https://www.gofundme.com/f/una-gift-shop>) and the Ecumenical Hunger Program (<https://www.ehpcare.org>).



## Oscar (Oz) Robert Pieper

October 13, 1935 – October 21, 2021

Resident of Portola Valley

Oz Pieper passed away after a long 12 year battle with Alzheimer's disease on Thursday morning October 21st. He was surrounded by family. Oz was born in Milwaukee, Wisconsin. His parents were Ruth Fehr and Robert O. and late sister Ruth Thwaite and brother Fred. Oz met his wife, Janice, at the University of Colorado in 1955. He was a member of Phi Delta Theta fraternity.



When Oz graduated from the University of Colorado his first employment was with the Bank of America's training program in San Francisco. He then moved into technology working for RCA computers.

Oz sold a computer to Cooper and Lybrands, a well known consulting firm. They were so impressed with Oz's knowledge they hired him to be a consultant. After his consulting career he founded Identicator Corporation leading in fingerprint technology. Oz opened offices in Los Angeles, Washington D.C. and St. Petersburg, Russia.

In 1998 Oz sold Identicator and began consulting once again and joined Menlo Country Club and took up the game of golf and spent countless hours in his garden. He also enjoyed traveling and cherished family get togethers.

Most of all Oz's family meant everything in the world to him. He is survived by his wife Janice of 66 years, his daughter Susan (Grant), son Chris (Elana), and five incredible grandchildren, Lauren (Marc), Kameryn (Aaron), Scott, Gwendolyn and Reed. 'Papa' is famous for his games of dominos, cards, paddle tennis and pancakes.

The family requests in lieu of flowers please make a donation in Oz's name to either Part the Cloud with the Alzheimer's Association (research), The Women's Alzheimer's Movement (research and education) or HFC (education and caregiver support).

There will be a Celebration of Oz's Life in the near future.

Thank you to all of you who have supported us through these challenging years.

PAID OBITUARY

PAID OBITUARY



# Pulse

A weekly compendium of vital statistics

## POLICE CALLS

- Palo Alto**  
Oct. 28-Nov. 3
- Violence related**  
**University Avenue**, 10/9, 11:59 a.m.; battery/sexual.  
**El Camino Real**, 10/13, 10:22 p.m.; simple battery.  
**Pasteur Drive**, 10/19, 10:10 p.m.; battery/sexual.  
**Hamilton Avenue**, 10/22, 11:39 a.m.; elder abuse/physical.  
**Embarcadero Road**, 10/22, 2:56 p.m.; simple battery.  
**Welch Road**, 10/25, 4:41 p.m.; sex crime.  
**High Street**, 10/29, 10:04 a.m.; arson.  
**Emerson Street**, 10/31, 12:40 a.m.; domestic violence/battery.  
**University Avenue**, 10/31, 6:40 p.m.; simple battery.  
**Waverley Street**, 10/31, 8 p.m.; simple battery.
- Theft related**  
Commercial burglaries . . . . . 1  
Identity theft . . . . . 1  
Residential burglaries . . . . . 3  
Shoplifting . . . . . 1
- Vehicle related**  
Auto recovery . . . . . 1  
Auto theft . . . . . 4  
Bicycle theft . . . . . 2  
Driving w/ suspended license . . . . . 5  
Hit and run . . . . . 1  
Lost/stolen plates . . . . . 2  
Theft from auto . . . . . 8  
Theft from auto attempt . . . . . 1  
Vehicle accident/minor injury . . . . . 5  
Vehicle accident/prop damage . . . . . 1  
Vehicle tampering . . . . . 1  
Vehicle tow . . . . . 2
- Alcohol or drug related**  
Drunk in public . . . . . 3  
Possession of drugs . . . . . 4  
Possession of paraphernalia . . . . . 2
- Miscellaneous**  
Brandishing . . . . . 1  
Elder abuse/neglect . . . . . 1  
Found property . . . . . 3  
Hate incident . . . . . 1  
Located missing person . . . . . 1  
Misc. penal code violation . . . . . 1  
Outside investigation . . . . . 1  
Psychiatric subject . . . . . 5  
Suspicious circumstances . . . . . 1  
Unattended death . . . . . 2
- Menlo Park**  
Oct. 27-Nov. 2
- Violence related**  
**Sharon Park Drive**, 10/29, 12:13 p.m.; assault and battery.  
**Oak Grove Avenue**, 10/29, 10:01 p.m.; battery.  
**Haven Avenue**, 11/2, 1:11 a.m.; domestic battery.
- Theft related**  
Burglary . . . . . 4  
Fraud . . . . . 4  
Grand theft . . . . . 2  
Identity theft . . . . . 1  
Petty theft . . . . . 1
- Vehicle related**  
Auto recovery . . . . . 1  
Auto theft . . . . . 1  
Hit and run . . . . . 3  
Vehicle accident/minor injury . . . . . 1  
Vehicle accident/no injury . . . . . 1
- Miscellaneous**  
Business check . . . . . 4  
Juvenile case . . . . . 1  
Lost property . . . . . 1  
Mental evaluation . . . . . 2  
Other/misc. . . . . 3  
Property for destruction . . . . . 1  
Resist arrest . . . . . 2  
Warrant arrest . . . . . 4

## OBITUARIES

A list of local residents who died recently:

**Carole Lucille Nordstrom Kraiss**, 73, a former teacher of First Congregational Nursery School and a Palo Alto resident, died on June 14. **Frances Halstenrud Ragno**, 95, a Palo Alto resident, died on Oct. 13. **Mary Helen Armstrong**, 94, a Palo Alto resident, died on Oct. 26.

To read full obituaries, leave remembrances and post photos, go to Lasting Memories at [PaloAltoOnline.com/obituaries](http://PaloAltoOnline.com/obituaries). ■

## Visit Lasting Memories

An online directory of obituaries and remembrances.

Search obituaries, submit a memorial, share a photo.

Go to:  
[PaloAltoOnline.com/obituaries](http://PaloAltoOnline.com/obituaries)

# Marketplace

The Palo Alto Weekly offers advertising for Home Services, Business Services and Employment.

If you wish to learn more about these advertising options, please call 650.223.6582 or email [digitalads@pawebly.com](mailto:digitalads@pawebly.com).

## Frances Halstenrud Ragno

October 15, 1925 – October 13, 2021

Frances Rose Halstenrud Ragno died peacefully on October 13, 2021, in Stanford, CA, surrounded by family. The oldest of three children born to Frances M. Bouska and Carl J. Halstenrud, Fran grew up in Albany, CA where her father worked nearby for Standard Oil. Her parents, of Bohemian and Norwegian descent, met in Long Beach, and moved together to Northern California. Fran's lifelong love of travel may have been sparked by childhood trips back to Kansas and Minnesota to visit extended family in the Midwest communities where her parents grew up.



Fran attended Albany public schools, U.C. Berkeley, and graduated from UCLA with a degree in political science, where she was a member of Delta Gamma sorority and made cherished, lifelong friends. At UCLA she met her future husband, Donald Ragno. Upon graduation, they married and moved to Palo Alto, where they raised five boys.

A devoted mother, skilled cook, talented homemaker and hostess, and loyal friend, Fran was also a dedicated volunteer at Allied Arts (Children's Hospital at Stanford), and a teaching docent for the Committee for Art at Stanford, giving countless presentations in local public schools, leading sculpture walks on campus, and spending many hours through the years preparing for and working at Treasure Market. After her children were grown, she worked for multiple years for a friend's estate sale business, Heirloom Estate Sales, as well as at Nature's Octagon in Sharon Heights, as a co-owner and enthusiastic floral designer.

A disciplined artist beginning in the 1960's with abstract watercolors, Fran studied and painted landscapes and still lifes in watercolors, oils, and acrylics, and exhibited her work locally. Photography was another love, particularly flowers and doors. An inveterate traveller, Fran enjoyed many trips abroad with Don, mutual friends, and family. She created wonderful albums of photos upon returning from each far-flung locale, and loved sharing stories about her experiences.

In addition to her beloved sons, Fran welcomed the addition of girlfriends and daughters-in-law to the family, along with the arrival of grandchildren and great-grandchildren. Fran and Don's lovely home was always a welcoming, special place for friends and family and she extended hospitality and warmth unstintingly to all who crossed its threshold. In recent years, Fran was a resident of the Vi in Palo Alto.

Fran is survived by her brother, Gerald Halstenrud (Virginia), her sons, Brock, Matt, John, Marty (Joan), and Donald Jr. (Jennifer), her grandchildren Kirsten Poole (Dave), Jason, Ashley Hall (Andrew), Casey, Julia, Robert (Lizzy), and Meredith Ragno Arora (Eshaan), and six great-grandchildren. She was preceded in death by her husband, Donald, and a sister, Dorothy. The family would also like to thank Fran's remarkable and loving team of caregivers through the years including Lupe Fakalelu, Rhea Lazarte, Lily Zhou, and Kenza Bensouda.

A memorial service will be held on Friday, November 5th, at 1 pm at The Vi, University Room, in Palo Alto.

PAID OBITUARY

## Carole Lucille Kraiss

November 28, 1947 – June 14, 2021

Carole Lucille (Nordstrom) Kraiss, born November 28, 1947, 73, passed away surrounded by her loved ones on June 14, 2021. Born in Denver, Colorado, Carole grew up camping in the Rockies with her siblings, Dale, Debbie, & Bruce. Her parents, Thora and Dale Sr. instilled a lifelong appreciation of nature which she would later pass along to her children.



After graduating from Colorado State University, majoring in Education, Carole ventured to Chicago, where her passion for child development blossomed into a career as an elementary school teacher. Chicago is also where she met the love of her life, Bob, who was instantly attracted to her wit, sense of humor, beauty, and stunning blue eyes. Bob and Carole shared 47 years of marriage filled with love and adventure.

Together, they moved to Palo Alto, CA, in 1977 and raised their three children, Nicole, Michelle, and John. Carole believed in the importance of family and loved her children with her whole being. Carole was excited to gain another daughter to love through John's wife Mary. Carole had a special connection with each of them and a gift for writing cute notes as well as long letters. She made each holiday special with thoughtful gifting, decorating, and creating family traditions, including showing off her Swedish heritage every Christmas meal.

While raising her children, Carole was an early childhood educator at the First Congregational Nursery School for over 25 years and affectionately known as Teacher Carole. She effortlessly connected with young children and their families. She proved to be a great role model for the children, parents and other teachers. Carole admired Fred Rogers and many times repeated, "You've made this day a special day, by just your being you. There's no person in the whole world like you, and I like you just the way you are."

Carole also volunteered within her community and was active in her children's extracurricular activities. She helped to save the Winter Lodge ice skating rink from closure, supported city council campaigns, served as PTA president, volunteered as treasurer for sports teams, and taught Sunday school.

Carole's final adventure was being the world's best grandma (Gammie) to her three grandchildren, Ellie, Emma, and Royce. She created magic for them with Little Bear, fairy gardens, Legos, building projects, and rock collections. Carole formed many lifelong friendships and was loved by her extended family, her children's friends, her students, her book group, and everyone who met her. She was creative, an amazing nurturer, genuine, selfless, a natural optimist, a joyful presence, and at parties, danced like no one was watching. Carole had many talents, but her greatest talent was making the world more beautiful just by being in it.

PAID OBITUARY

# Arts & Entertainment

A weekly guide to music, theater, art, culture, books and more, edited by Heather Zimmerman

## Centered on the community

### EPACENTER opens after decade of work by young activists in East Palo Alto

By Heather Zimmerman | Photos courtesy Christopher Bagley/EPACENTER

In the earthquake-prone Bay Area, an epicenter is usually not the place to be when things start shaking, but the opposite is true of EPACENTER, a new youth arts center in East Palo Alto. The name may share its pronunciation with “epicenter,” but the new facility offers a rock-solid foundation in arts and leadership for local young people — created by the community, for the community.

The center brings together visual and performing arts, technology and makerspaces, and youth resources in a 25,000-square-foot building with state-of-the-art facilities at 1950 Bay Road. Construction of the center, which began in 2018, is completed, but with the pandemic still a concern, the official opening will be in 2022, though the center

is already featuring virtual classes.

The culmination of the vision of local youth to create a center for the arts in East Palo Alto, EPACENTER offers free classes in a wide variety of artistic disciplines for youth ages 3 to 25.

The arts center represents over a decade of work by the Youth Action Team, and other groups of dedicated East Palo Alto youth activists, such as Live in Peace and Youth United for Community Action, said EPACENTER Executive Director Nadine Rambeau.

The efforts of these groups to support arts programs in East Palo Alto began around 2010, with youth and adult allies organizing art programs and projects in the city and surveying the community to find out how an arts center would best

*This building is a symbol of the fact that youth in this community had a vision for what they needed and it is now coming alive and it's going to benefit other kids way into the future.'*

— Nadine Rambeau,  
EPACENTER Executive  
Director

#### About the cover:

EPACENTER, East Palo Alto's new youth arts center, offers a variety of spaces for learning, creativity and performance. Photos courtesy Christopher Bagley/EPACENTER. Cover design by Douglas Young.



EPACENTER's amphitheater area offers plenty of space for students to gather.



Above: State-of-the-art facilities at EPACENTER include spaces for where students can practice and perform, such as this dance studio. Top: EPACENTER, a new youth center located in East Palo Alto, was developed in collaboration with local youth and families.

serve residents.

And from the center's name, to the choice of renowned architect Kulapat Yantrasast to design the building, to planning the facility's diverse course offerings, the process to make EPACENTER a reality was driven by local youth and their families.

“Not everyone has the opportunity to see what they envision come alive. That's what this building is, it's a symbol of the fact that youth in this community had a vision for what they needed and it is now coming alive and it's going to benefit other kids way into the future,” Rambeau said.

EPACENTER features a variety of spaces for learning, creation, performance and exhibition: studios for dance, recording, art, and music, with adjoining practice rooms; a black box theater; art gallery; makerspace; technology lab and design studio; cafe and indoor gathering area; and an amphitheater. The building is also environmentally sustainable, earning a LEED Platinum certification.

The center was created as a unique place to bring high-quality arts education to East Palo Alto, a community often left out of the big paydays of Silicon Valley, but greatly affected by its powerful economic forces, Rambeau said.

“We're committed to making sure that everyone in Silicon Valley

— in this wonderful place where there's a lot of innovation and talents — that everyone has access to become that person who makes the next thing that the whole world will be able to benefit from. So at a place like EPACENTER, that's what we want to have happen, where students can become that person.”

The purchase of the land where EPACENTER sits, and the building's design and construction were funded by the John & Marcia Goldman Foundation, which focuses on grants in the areas of youth, health and the arts. John Goldman said that the community's youth led the project, and it represents their vision.

“We were not the ones that were telling them what we wanted, they were telling us what they needed. And we were there to make it happen,” Goldman said.

A council of youth advisers shaped both the design of EPACENTER and its programming, ensuring that both the facilities and programming would truly reflect the needs of the community they were created for.

Students on the advisory council represented various artistic disciplines, from music and dance to digital media, said sisters Elizabeth and Keitlan Wallace, who currently serve on the advisory council and both study dance.

Keitlan Wallace, 20, who's been



Students practice playing music in the black box theater at EPACENTER.

active with the center for about four years, said that in the planning process, some priorities for her and Elizabeth, 14, were ensuring there was a sizable dance practice room.

“It was a major thing because we used to practice in a very small room. We really needed a big space — a private space — for us dancers to do choreography and performances.

The theater was a big one for all of us,” she added.

Elizabeth and Keitlan Wallace also agreed on the importance of having a place to eat at the center, where students can both refuel and gather.

When considering the programming, the Wallaces said that one challenge was thinking about how to accommodate a wide range of ages and interests, but when it came to finalizing classes, there were more course offerings than originally expected.

“We were shocked to see that they had given the community a lot more options. They added some programs, like college admissions for high school students who are thinking about going to college,” Keitlan Wallace said.

Staci Edwards, 18, a music student who plays guitar and upright bass, is a current member of the center’s Youth Advisory Council and has been active in the center’s planning for about four years. She described her hopes for EPACENTER as a safe place where the youth of East Palo Alto can gather, connect with mentors and develop both their artistic talents and leadership skills.

Edwards said she was mindful of the need for “a way for the youth to safely express themselves, to have a space where they can be vulnerable and be creative.”

But in addition to arts education, she emphasized broader skills to help navigate the challenges brought by the Bay Area’s economy and the ever-increasing expense of living here.

The center is also about “helping the youth be better lead-

ers, and allow the youth to step through different opportunities and be able to stay here in Silicon Valley, without having to leave — so, finding a job here, knowing how to live here and not being forced to go,” Edwards said.

Students ages 14 and up can not only take art classes at EPACENTER, but also learn how to parlay creative skills into livelihoods, with internships and apprenticeships that provide real-world experience, as well as learn essential behind-the-scenes skills, such as marketing and business planning.

Since 2010, as the group of students involved in the project has slowly changed, with some “aging out” and other students getting involved, the vision for the center itself has continued to evolve, Rambeau said. The center plans to broaden programming beyond strictly an arts focus, at the request of the youth advisers and the community.

“They were thinking about how they would like to see us respond now, in the face of COVID and in the face of the murder of George Floyd and other individuals,” she said,

To help support local economic needs, EPACENTER will offer workforce development classes such as career skills and job training.

Rambeau said that youth also raised concerns about racial, economic and social status divisions in East Palo Alto, seeking a way to bring people together.

To that end, the center is currently holding art therapy classes and has plans to offer music and drama therapy, to help find some healing in the midst of numerous stressors and crises like COVID.

EPACENTER recently received a \$500,000 “adaptation grant” from the William and Flora Hewlett Foundation to help address the challenges brought about by the pandemic. The funds will also help in planning and implementing programming longer term.

“This organization is becoming fluid and responsive to a co-

***‘I would like EPACENTER to be like a home for the community to be creative, to look at EPACENTER, and be motivated to make new things, to have the opportunity and the resources to express yourself.’***

—Staci Edwards, Youth Advisory Council member

hort of students that is constantly going to be changing,” Rambeau said.

The pandemic has meant that the center has pivoted both in what programming is available, but also how it’s offered, with classes still online for the time being. EPACENTER is offering a variety of online courses this

fall, including art, dance, design, film and music classes, with plans to begin holding in-person classes in January.

Although classes aren’t in person yet, the process of planning EPACENTER and seeing it realized has already made it an important presence in the community — one likely to make an impact for years to come, thanks to the vision of local youth leaders.

“I would like EPACENTER to be like a home for the community to be creative, to look at EPACENTER, and be motivated to make new things, to have the opportunity and the resources to express yourself,” Edwards said.

“People have different passions and I think this program will give them opportunities to reach those goals. That’s what I want for the future, I want it to get known for helping individuals reach their passions and their goals,” said Keitlan Wallace.

For more information, visit [epacenter.org](http://epacenter.org). ■

Email Arts & Entertainment Editor Heather Zimmerman at [hzimmerman@paweeekly.com](mailto:hzimmerman@paweeekly.com).

## Midpen Wants Your Redistricting Map Feedback!

Let us know what you think about our draft ward maps

**Midpen desea recibir sus comentarios acerca de los mapas de redistribución de distritos!**

Háganos saber lo que opina acerca del borrador de nuestros mapas de distrito electoral.

Like other public agencies, the Midpeninsula Regional Open Space District is governed by a board of elected officials. Each board member represents a ward of approximately the same number of constituents. We’re now looking at the changes in the communities within our boundaries over the past 10 years and redrawing ward boundaries to ensure equitable representation. Based on new 2020 census data, we now have new, draft maps that our Board is considering.



### An easy way to provide feedback!

Midpen is offering a new online tool to get your feedback on proposed new ward boundaries.

Midpen’s MyDistricting tool lets you add comments on an interactive map to provide input, share ideas and suggest things to consider when defining the new boundaries of each director’s ward.

Go to [openspace.org/redistricting](http://openspace.org/redistricting) to access our Ward Redistricting website, access the MyDistricting tool and sign up for notifications.

We need your feedback by **Friday, December 10**, to ensure your input is considered in our analysis. From the app, click “show me how” to watch an instructional video.

Staff contact: GIS Program Administrator Jamie Hawk, [jhawk@openspace.org](mailto:jhawk@openspace.org) or 650-691-1200.





1117 HAMILTON AVENUE  
PALO ALTO



## SPECTACULAR MEDITERRANEAN IN PRESTIGIOUS CRESCENT PARK

On exquisite grounds of nearly one-quarter acre in prime Palo Alto rests this stunning Mediterranean masterpiece that showcases warmth, elegance, and an incredible attention to detail. A marvel of architectural design, this home offers almost 3,400 square feet of living space filled with high-end appointments, top-of-the-line materials, and handcrafted finishes, with 5 en suite bedrooms providing comfortable accommodations. A grand fireplace anchors the inviting living room, the spectacular kitchen is sure to inspire chefs of all skill levels, and the wine room with tasting area stands ready for the discerning connoisseur. The primary suite enjoys a luxurious bathroom that opens to a private spa terrace, while a staircase leads to an upper level guest suite with its own living/dining room and kitchen. Experience true indoor/outdoor living as multiple points throughout the home open to the grounds that feature a gorgeous central courtyard with a fireplace, remarkable rear hardscape, and an outdoor kitchen, while an extended driveway and 2-car garage with carport provide ample parking. Just blocks to University Avenue, and convenient to Stanford University as well as commuter options, this home is also served by top-ranked schools Addison Elementary, Greene Middle, and Palo Alto High (buyer to verify eligibility).

**OPEN HOUSE: SUNDAY 1:30 PM - 4:30 PM**

[www.1117Hamilton.com](http://www.1117Hamilton.com)

Offered at \$6,588,000

Listed by the DeLeon Team • 2.5% Commission Paid to Buyer's Agent • Waived if DeLeon Buyer's Agent

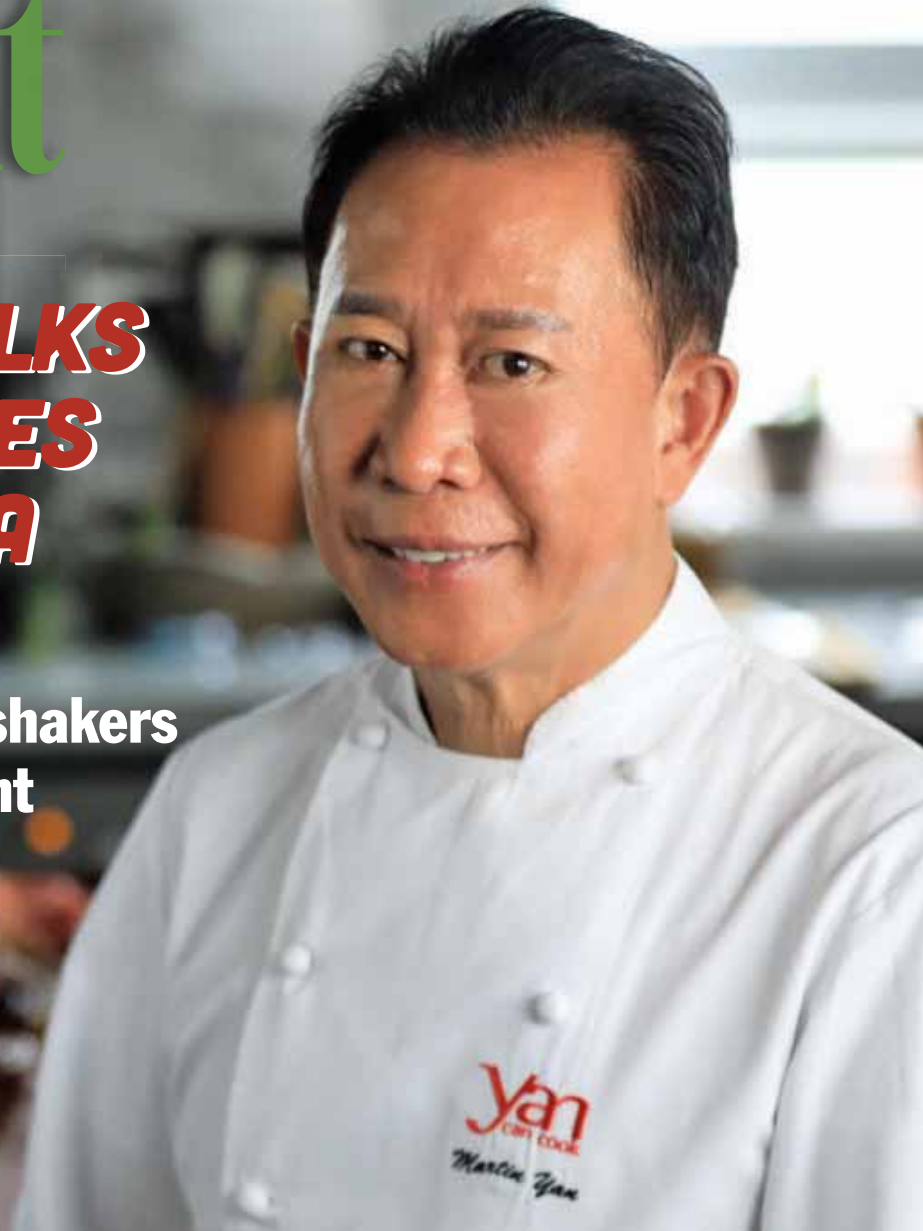
For more information contact: Alexandra Wilbur, DRE #01926475 | 650.459.3888 | alex@deleonrealty.com  
Managing Broker: Michael Repka, DRE #01854880 | www.deleonrealty.com | DeLeon Realty, Inc. | DRE #01903224

# Eating Out

## CHEF MARTIN YAN TALKS WOK HEI AND NOODLES FOR LONGEVITY IN A CLIMATE CRISIS

Yan joins Bay Area food movers and shakers for Acterra Holiday reFresh event

By Sara Hayden



Martin Yan, an acclaimed chef, culinary consultant and TV personality, is highlighting plant-based dishes and induction cooktops for holiday tables at a Nov. 7 event sponsored by Palo Alto nonprofit Acterra. Photos courtesy Yan Can Cook.

I'm waiting on a feature-length biopic movie of legendary chef Martin Yan (filmmaker friends, take note!), but until that gets produced, I'm glued to a YouTube clip. Almost as impressive as Yan's deboning a chicken in 18 seconds, this particular clip leaves me on the edge of my seat: It cuts just as Master Chef Yan starts to cook one of his favorite dishes in a wok, not over a volcanic gas-fueled flame, but on an induction cooktop. "You get all the responsiveness of cooking with gas, but it's better for you and the environment," Yan tells the camera. And I want to know — "How does this possibly work?"

That's the point of this cliffhanger. I'm going to have to tune into an upcoming cooking demonstration to see what happens next. This teaser leads up to a Nov. 7 event that features Yan of Yan Can Cook and other acclaimed Bay Area food movers and shakers, including Crystal Wahpepah of Wahpepah's Kitchen, Kenny Annis of Sky Cafe, Shruti Boddu of Shru's Kitchen and Alicia Casas of Jaguar Baker. They'll all demo some of their favorite plant-based dishes during the Holiday reFresh event sponsored by Acterra, a Palo Alto nonprofit dedicated to cutting greenhouse gas emissions. A couple of steps to that include reducing meat production and consumption (eat more plants), as well as reducing fossil fuel use (use renewable resources).

Acterra's Robbie Brown said in a statement: "Bringing people together around the table, especially over the holidays, opens up new conversations about how we fuel our bodies each day, and how small incremental changes add up to a much greater impact. We hope our virtual cooking event will show

people how fun and creative plant-based cooking can be, with the benefits of better health and a cleaner environment."

So I want to know, can you get that distinctive caramelizing wok hei effect on an induction cooktop? As some local energy code changes took effect a year ago requiring use of all electric in new builds, is investing in an induction cooktop feasible and desirable for restaurateurs and home cooks, particularly those that have a tradition of using fuels like gas or wood? It's a dream to have the opportunity to discuss these questions with Yan, a chef, culinary consultant, food scientist and TV personality.

In a more than 40-year career, Yan has connected with audiences across the world. With thousands of cooking show episodes, dozens of cookbooks, a list of honors (including James Beard awards and an Emmy Award) and influential restaurants, he's played a pivotal role in shaping the contemporary culinary landscape.

Yan also fulfills a critical role as a public educator. In addition to teaching at culinary institutions and consulting, Yan has been a mainstay in home cooks' living rooms since 1978 with "Yan Can Cook." It first aired in Canada, and then in the U.S. on PBS in 1982 as one of just three cooking programs, presenting one of the first Asian-led cooking shows.

To tune in for the cooking demonstration, register at [bit.ly/acterra-nov7](http://bit.ly/acterra-nov7).

I spoke with Yan over the phone on Monday to talk about his case for the induction cooktop and what that means for traditional cooking practices. This interview was edited for length and clarity.

**Peninsula Foodist:** Your work has opened up the world of Chinese cooking for so many, including myself. And you shaped the conversation about the art of cooking overall. I'm thinking about the call, "If Yan can cook, so can you," and that's given me the confidence that I can indeed cook.

**Martin Yan:** You are too kind ... In the past, we do it on the television screen. And then later on, the live events all over the world, filming. But that takes a lot of time. And then you have to do on-location scouting, just like a movie. To do a show like that, it takes a lot of money, it takes a lot of time, a lot of headaches, a lot of logistics.

In the past, I traveled all around the world to bring the best of food and culture and travel and heritage from different parts of the world to the U.S. audience. That was the same show that was broadcast to 60 countries around the world.

With these kinds of (virtual) events, once we've recorded, we can put it back in all kinds of social media platforms.

Now, I just sit and stand in the comfort of my own kitchen in the Bay Area (in San Mateo), and I can reach people around the world.

**Foodist:** And it sounds like the Acterra Holiday reFresh event is one of those. I'm particularly interested in the idea of using an induction cooktop.

**Yan:** For everybody, including this G-20 summit, one of the most important subject matter is global warming and climate change. The traditional cooking method is in the early days wood, and later on is charcoal and mesquite and coal. Later on, it was electricity. But all of these you need to use fossil fuel to generate the power.

Then induction on the other hand, it helps



Chef Martin Yan of Yan Can Cook features a dish of rainbow vegetables over a noodle pancake as part of Acterra's Holiday reFresh program.

to alleviate some of these problems, because you have zero emissions and very minimal waste of energy. Because an induction burner has a magnetic field, it only heats up where contact is, and around it is cool — so you don't waste energy.

When you use wood fire, when you use gas, a lot of radiant heat, you use a lot of energy.

About eight to 10 years ago, I worked with an induction cooktop manufacturer. Nowadays, you go to all the cruise ships, you go to all the five-star hotels, they have induction. It's nothing new, it's been around a long, long time.

But the thing is, sometimes an induction burner is more expensive, so it was never really as popular. Nowadays, most housing (and building) projects, they are starting induction burners. It's all induction cooking.

(continued on page 22)

**Martin Yan**

(continued from page 21)

The government is doing it, and the whole world is watching because of global warming and climate change.

**Foodist:** I remember about a year ago, hearing about this especially in San Gabriel Valley around Los Angeles. For restaurants, it sounded like there was some concern, both for getting wok hei and that really hot cooktop to get the texture and the taste, and also the cost to switch out, especially for smaller restaurants. How do you think about balancing all these concerns?

**Yan:** First of all, I think there's a misconception. A lot of people are resistant. With a gas burner, you can see the flame. You can hear the noise when you cook. With an induction burner, you cannot hear, you cannot see. Mentally and psychologically, you might say, "Hey, it's not heating." But theoretically, scientifically and technically, an induction burner is not only efficient and energy-saving, but it's a lot more powerful

than a lot of people think.

That's why in Hong Kong and China, they've developed a wok induction unit that is round. In the old days, all the induction burners were flat for frying pans, but now they've developed a concave, bow-shaped induction burner so you can put a wok on top of it. It heats up a lot faster than gas and electric. A lot of people don't realize that.

The only thing is aluminium will not work on an induction burner, but nowadays pots and pans in the market are induction cooktop applicable.

**Foodist:** The first part of that question was actually from my mom, so thank you, she'll be glad to hear this.

**Yan:** Of course. Tell your mom to try to heat up the same amount of water. Turn it up to high with an induction cooktop and a gas cooktop. She'll be very impressed, because with induction burners, the heat is instant.

**Foodist:** For home cooks or restaurants considering making the switch, do you have tips on offsetting the cost? Is this an upfront investment?

**Yan:** In the short run, an induction cooktop is much more expensive. But in the long run, if you believe you're running your business in the long haul, not one or two years, then you save a lot of energy. That means your gas bill, your electric bill, is a lot less.

Not only that, but the heat of the kitchen, you don't waste as much energy, because you don't have to turn on a huge fan and air conditioning.

All in all, it's a lot cleaner energy, and more controllable.

But of course, the drawback is for smaller business the cost. It's probably a bit of a burden for the initial investment. I know that is pretty true.

**Foodist:** Are there ways that you have to adjust your cooking technique?

**Yan:** You just have to get used to it. I'll give you an example: In the old days, in the burner they used wood chips to heat it up, and you constantly have to add wood to balance it out. You keep adjusting, because it's not consistent.

And then (it was) gas. But gas, it's a natural resource, so eventually that will be depleted, that will be gone.

So for future, that's why you have renew-

able energy. An induction burner, all you need is electricity. That can be generated by wind, by solar. So that's why I personally believe renewable energy is the future, and induction cooking is part of the equation.

**Foodist:** Is there still a place for heritage practices like cooking with wood and meat? I think of the Chinese character for "home," which has a pig at its center, and I think of that as being central to a lot of home life.

**Yan:** Part of the solution is cutting down consumption of meat ... With the population explosion, there's a loss of arable lands. You drive around (Highway) 101, you drive around (Interstate) 5, you drive on 99 or 80 ... I went to UC Davis, I remember everything is farmland. Now you look around, there's a lot of high rises, a lot of development, a lot of housing.

Eventually you have to find a way to do it. The world is changing, and we have to adapt to it.

Talking about plant-based products — the Asians were practicing this a long, long time, because meat is very precious in many parts of the world.

Personally ... I eat a lot of vegetables. In the entire meal, meat is basically used as a flavoring component, to give texture and flavor.

Even now, when I go to a steakhouse, me and my wife always order a small steak and we share. I never finish 12 ounces.

**Foodist:** When my grandma first came from Guangdong area, she didn't eat beef at all, until her neighbor in Wyoming said, "This is an American delicacy. You have to eat it." So she'd get a steak for the whole family and then she'd cut it up and serve it with their vegetables over rice.

**Yan:** In Chinese cooking, you have celery, you have Napa cabbage, you have gailan — all these are loaded with a lot of nutrients and trace minerals and fiber.

You go to a lot of restaurants, and the vegetable is the sidekick. They are not main players, they are supporting cast. You order a steak, and maybe you pick a side vegetable ... and it's overcooked.

But in a good Chinese dish, in a good Asian dish, there are four elements: One is appearance. If you cook the vegetable to

death, you lose the color, you lose the texture, you lose the nutrients. They look dead. The color (should be) vibrant. Secondly is aroma. Stir-fry uses a high temperature for a short time, very, very quick. They don't destroy much nutrients. And then you get the aroma — the wok hei — the breath of the wok.

And then, the taste. When you cook vegetables along with meat, the umami flavor permeates and flavors the vegetables.

And then, texture contrast. When you bite into something, you gotta have texture.

So it's appearance, aroma, taste and texture contrast.

**Foodist:** You can get all that with an induction cooktop?

**Yan:** You can get all that with an induction cooktop. You can toss the way you toss on top of a gas burner or an electric burner. (On induction,) you lift it up and it's disconnected, and so it's energy efficient. But as soon as you put it back, BOOM — it's hot and bubbling again. It brings the boil again.

**Foodist:** Can I ask what dish you'll be preparing for the event?

**Yan:** I'm doing a vegetarian mushroom, assorted vegetable stir-fry with a stir-fry sauce over a noodle pancake.

I want to tell people it's symbolic. Whenever you celebrate something, you always serve noodles. Noodles are long, so it's a symbol of long life, longevity — so we want to promote the longevity of Earth. We want to promote the longevity of human, mankind — so we won't be extinct, running out of natural resources.

And also it's a celebration of life. That's why noodles are always served for weddings and anniversaries and birthday parties.

It's a symbol of long life, longevity and long lasting. ■

*Email Associate Digital Editor*

*Sara Hayden at*

*peninsulafoodist@almanacnews.com.*



As part of the Acterra Holiday reFresh program, Chef Martin Yan promotes the use of induction cooktops as a way to reduce reliance on gas and fossil fuels.

*Kozy Brothers*  
**DE MARTINI ORCHARD**

66 N. San Antonio Rd., Los Altos • 650-948-0881 • DeMartiniOrchard.com

<b>ORGANIC CALIF SEEDLESS GRAPES</b> \$3.49 LB	<b>CALIF-GROWN SATSUMA MANDARINS</b> NEW CROP, SWEET & JUICY, SEEDLESS \$2.99 LB	<b>LONG GREEN ASPARAGUS</b> TENDER, MEATY SPEARS \$2.99 LB	<b>HOLIDAY BAKING ITEMS</b>
<b>ORGANIC LOCAL CELERY</b> \$1.29 BUNCH	<b>LOCALLY GROWN FUYU PERSIMMONS</b> \$1.99 LB	<b>ORGANIC LOCAL BUTTERNUT SQUASH</b> 99¢ LB	<b>GLACE FRUIT NOW IN STOCK</b>
<b>ORGANIC LOCAL BABY BOK CHOY</b> \$1.49 LB	<b>WILD HARVEST CHANTRELLE MUSHROOMS</b> \$14.99 LB	<b>NATURALLY GROWN GIZDICH RANCH APPLES</b> 2 LBS FOR \$5	<b>ALMOND PASTE</b> \$18.99 LB
<b>AS KNEADED BAKERY</b> is a Woman-Founded Artisan Bread Maker in San Leandro	<b>CHECK OUT OUR NEW MOBILE APP!</b> GET ALL OF YOUR FAVORITE PRODUCE AND GROCERIES DELIVERED OR SET FOR A CURBSIDE PICKUP! GOOGLE APP SHOPDEMARTINI.COM APPLE APP		<b>BLACK RAISINS</b> \$3.49 LB
			<b>SHELLED PECANS</b> \$12.49 LB
			<b>MEDJOL DATES</b> \$11.49 1# PKG
			<b>SHELLED ALMONDS</b> \$7.49 POUND
			<b>SHELLED WALNUTS</b> \$6.99 POUND
			<b>DRIED FANCY BLENNHEIM APRICOTS</b> \$19.99 LB
			<b>DRIED SLAB BLENNHEIM APRICOTS</b> \$25.99 LB

**OPEN DAILY 8AM-7PM • PRICES EFFECTIVE 11/3 thru 11/9**

**deleon**  
P L A T I N U M

**OUR TEAM IS IN MOTION FOR YOU**

**DELEON REALTY, INC.**

Michael Repka | CEO & Managing Broker | DRE #01854880  
650.900.7000 | Info@deleonrealty.com  
www.deleonrealty.com | DRE #01903224

# Exceptional care for your heart and vascular health

NOW  
OPEN



Our patients reflect the diverse fabric of the Golden State. Their needs and life stories are one-of-a-kind, but they seek the same experience: Exceptional heart and vascular care from an exceptional team of medical experts.

#### OUR SPECIALTIES:

Preventative & Non-Invasive Cardiology | Interventional Cardiology | Structural Heart  
Vascular & Endovascular Intervention | Vein Care & Treatment | Cardiac Rhythm Management

[gshav.com](http://gshav.com)

650-695-0955  
2490 Hospital Drive  
Suite 106  
Mountain View 94040

Golden State  
HEART & VASCULAR



Dr. James Joye



Dr. Ajanta De

# Living Well

A monthly special section of news & information for seniors

## SILVER SLEUTHS

Fictional Palo Alto duo solves mysteries in baby boomer detective series

By Chris Kenrick

**M**arried 30 years and in their late 60s, Palo Alto residents Barb and Bernie Silver are retired insurance investigators who now run their own detective agency, Silver Investigations.

Accepting only cases in which “age is an edge,” their sleuthing has taken them from the top of Nob Hill to the jungles of Indonesia to a dank cell beneath Florence’s Uffizi Gallery, where they discovered a stash of excellent Mona Lisa fakes.

The intrepid — but fictional — Barb and Bernie are the creations of Palo Alto resident Ron Katz, who took up comedic mystery writing after retiring from a 45-year legal career.

Like many baby boomers, Barb and Bernie Silver are “struggling to find meaning in retirement,” and the same could be said of Katz.

After decades as a litigator and sports lawyer, Katz had planned to engage himself with kids, sports and academics when he retired, but he switched gears after studying mystery novel writing in a Stanford course during the summer of 2016.

Inspired by Dashiell Hammett’s characters Nick and Nora Charles in “The Thin Man,” Katz set his sights on writing stories featuring a mystery-solving couple who are baby boomers.

He completed the Stanford class with little more than a concept and a title, “The Mystery of the Missing Reading Glasses.” He found he usually got laughs whenever he

(continued on next page)



A framed graphic of “The Sleuthing Silvers” logo hangs on the wall in Ron Katz’ Palo Alto office. Photo by Magali Gauthier.

Palo Alto author Ron Katz turned to writing “The Sleuthing Silvers” series after working for decades as a sports lawyer. Photo by Magali Gauthier.



(continued from previous page)

mentioned the prospective title to friends of a certain age — Katz himself owns about a dozen pairs of reading glasses.

The idea simmered while Katz wound down his law practice. In 2019, he drafted a 5,000-word short story based on that title. In the story, Barb and Bernie go undercover as new residents of an assisted living facility to investigate suspicious opioid deaths.

Subsequently, in “The Mystery of the Perfect Profiles,” the two bust an online scammer by posing as singles seeking love on the senior dating sites “The 70-Year Itch” and “Chardonnay at Sunset.”

Later, the Silvers travel to Moscow, Helsinki and Paris while investigating the underbellies of philanthropy, wealthy donors and the high-end art market.

Boomer humor ensues.

While not on assignment, Barb and Bernie enjoy sipping watermelon Bellinis in their Palo Alto home, schmoozing with Stanford professors, relaxing with Snowball, their white terrier mix, and going for hikes near their Lake Tahoe condominium.

The sleuthing pair, Katz said, “are composites of everyone I know. I’m interested in my demographic, and I know a lot of Barbs and Bernies.

“They have a good relationship, they’re a good professional team — and they know each other’s foibles, of which there are many,” he said.

Katz so far has published 12 stories on



Ron Katz’ detective series centers around Barb and Bernie Silver, two baby boomers who travel the world solving mysteries. Courtesy Ron Katz.

his website, thesleuthingsilvers.com, as well as in the online publications Mysterical-E and Scarlet Leaf Review. Barb and Bernie have garnered 2,800 followers on their Facebook page and also operate a Twitter account. Katz recently worked with two professionals to develop a pilot he aims to submit to streaming platforms.

He checks frequently on reader feedback, particularly relishing comments such as: “I’m so happy to finally see

people of my age as heroes.”

Advertising on Facebook, he said, has been remarkably effective in targeting and building the heavily female audience for his brand of “cozy mysteries” — typically set in a small city like Palo Alto, having a prominent female character and containing minimal graphic violence, sex or obscenity.

“It’s more than a mystery — it’s a comedy of manners and it’s about lifestyle,” Katz said.

“I’m interested in snappy dialog and moving things along; quick cuts from scene to scene. People started telling me, ‘This really looks like a TV show.’”

Whatever happens, Katz intends to keep generating new escapades for Barb and Bernie.

“This will last as long as I live — I’m absolutely having a ball,” he said. ■

Contributing writer Chris Kenrick can be emailed at [ckenrick@paweekly.com](mailto:ckenrick@paweekly.com).

## More Doctors. More Benefits. More Savings.



Essence Healthcare Medicare Advantage plans offer low monthly premiums, comprehensive coverage and valuable extras not found in traditional Medicare plans. And you’ll have access to the area’s most trusted doctors and specialists.



**JOIN US** for a free, no obligation meeting to learn more.

### COMMUNITY MEETING

Tuesday, Nov. 9  
10:00 a.m.  
Double D’s Sports Grille  
354 N. Santa Cruz Ave.  
Los Gatos, CA 95030

### COMMUNITY MEETING

Wednesday, Nov. 10  
10:00 a.m. & 2:00 p.m.  
Aloft Hotel  
840 E. El Camino Real  
Mountain View, CA 94040

### COMMUNITY MEETING

Thursday, Nov. 11  
2:00 p.m.  
Oshman Family JCC  
3921 Fabian Way  
Pavilion Room, Bldg. C, 1st Floor  
Palo Alto, CA 94303

### WEBINARS

Saturday, Nov. 6  
10:00 a.m.  
Wednesday, Nov. 10  
2:00 p.m.  
Friday, Nov. 12  
10:00 a.m.

RSVPs are required for in-person meetings. To register, or for a complete list of meetings: Visit [www.EssenceHealthcare.com/Attend](http://www.EssenceHealthcare.com/Attend) or Call 1-855-423-4584 (TTY: 711)\*

## A Healthy Tomorrow Starts Today.

\*You can call from 8 a.m. to 8 p.m., seven days a week. You may reach a messaging service on weekends from April 1 through September 30 and holidays. Please leave a message, and your call will be returned the next business day. Essence Healthcare is an HMO plan with a Medicare contract. Enrollment in Essence Healthcare depends on contract renewal. For accommodations of persons with special needs at meetings, call 1-855-423-4584 (TTY: 711).

Y0027\_22-449\_C

PAW\_11.5

# Senior Focus



## Hire a Nurse for Peace of Mind

Your loved one deserves the best care.

Call NurseRegistry at (650) 523-9149 to get started.



**TUESDAY WALKS ...** The senior services agency Avenidas is sponsoring weekly **2-mile walks on flat, mostly paved surfaces** beginning Tuesday, Nov. 9. Extensions can be arranged for people who want to walk farther. Restrooms are available at all locations. The group will choose one location and meet there every Tuesday for the month. For Tuesdays in November, the meeting place is Palo Alto Baylands at San Antonio Road and Terminal Boulevard. Meet at 9:50 a.m., walk at 10 a.m. Questions? Call Patty at 650-387-5256.

**LONGER HIKES ...** Picchetti Ranch Open Space Preserve and Rancho San Antonio are among the November destinations for Avenidas Hikers, who meet for **moderate hikes on Thursdays followed by lunch**. Participants should be comfortable with hikes, on uneven surfaces, ranging from 3-8 miles with elevation gains between 300 and 1,000 feet. Space is limited. Online registration is required for the free walks. Trailhead information will be emailed to registered hikers the day prior to the hike. To register, go to [Avenidas.org](http://Avenidas.org), click on "Register Online" and search for "hike."

**PONDERING A LEGACY ...** The Palo Alto branch of Senior Planet, a tech-oriented group for seniors, will offer a new **Legacy Podcast Discussion Group** beginning Wednesday, Nov. 10 from 2-3 p.m. Each week the group will discuss episodes from the podcasts "A Life's Story" and "Zestful Aging," in which remarkable older adults share their life stories and latest projects. Discussions will focus on what makes life meaningful and satisfying in older age. To

register, email [rsvp@seniorplanetavenidas.org](mailto:rsvp@seniorplanetavenidas.org) and mention the Legacy Podcast Discussion Group. Registrants will receive login information to join the discussion.

**A PITCH FOR GERIATRICS ...** Louise Aronson, a geriatrician at the University of California, San Francisco and a New York Times bestselling author told a Palo Alto audience that **physicians should not just write off older patients' problems as old age**. "Old age increases the risk for disease, but is not in and of itself a disease," Aronson said. Many chronic conditions are treatable, she said. Aronson is the author of the 2019 book "Elderhood: Redefining Aging, Transforming Medicine, Reimagining Life." She spoke in a virtual presentation to Avenidas Village members on Oct. 22. To watch it, go to [avenidasvillage.org](http://avenidasvillage.org).

**END-OF-LIFE CONCERNS ...** November programs offered by Mission Hospice & Home Care include **"Hospice 101"** and **"Coping with the Holidays."** On Wednesday, Nov. 10, two registered nurses will explain what hospice is, why and when people might want it and how to request it. "Coping with the Holidays" is a free, nine-week virtual Monday evening support group to help grieving adults manage the holiday season. For more information on those and other programs, go to [missionhospice.org](http://missionhospice.org) and click on "events calendar."

*Items for Senior Focus may be emailed to Palo Alto Weekly Contributing Writer Chris Kenrick at [ckenrick@pawweekly.com](mailto:ckenrick@pawweekly.com).*

### Avenidas Wants You!

Some things are just meant to go together, like **peanut butter & jelly!**



At Avenidas, we think your work experience and skills might be the perfect match with one of our open positions!

### NOW HIRING

How will you know if you are the peanut butter to our jelly?

Come check us out:  
[www.avenidas.org/careers](http://www.avenidas.org/careers)



For complete schedule or info about Avenidas events, call 650-289-5400

### Living Well

## NOVEMBER 2021

### Calendar of Events

**Nov 1**  
**Tech and Innovation Discussion Group via Zoom**  
12-1pm, on Mondays. For info or to register, email [rsvp@seniorplanetavenidas.org](mailto:rsvp@seniorplanetavenidas.org). Free.

**Nov 2**  
**Mindful Engagement Podcast Discussion Group via Zoom**  
10-11am, on Tuesdays. RSVP required. For info, email [rsvp@seniorplanetavenidas.org](mailto:rsvp@seniorplanetavenidas.org). Free

**Nov 3**  
**Mindfulness Meditation, every Wednesday**  
2-3pm, via Zoom. Visit [www.Avenidas.org](http://www.Avenidas.org) for log on information. Free.

**Nov 4**  
**Avenidas Village Coffee Chat**  
10am via Zoom. Email [dgreenblat@avenidas.org](mailto:dgreenblat@avenidas.org) to register. Free.

**Nov 5**  
**Mandarin-Speaking Verizon Tech Talks (1:1 tech support)**  
9-10am, on Fridays. RSVP required. Email [raltneu@oats.org](mailto:raltneu@oats.org).

**Nov 7**  
**Picnic: Wonder Women Lesbian Social Group**  
2pm. Email [jchan@avenidas.org](mailto:jchan@avenidas.org) for more info and to RSVP. Free.

**Nov 8**  
**Apple Tech Talks (1:1 tech support)**  
1-2pm, and 3-4pm, on Mondays. RSVP required. Email [rsvp@seniorplanetavenidas.org](mailto:rsvp@seniorplanetavenidas.org). Free.

**Nov 9**  
**Tuesday Walks, starting 11/9**  
10am. Email [tmcloud@avenidas.org](mailto:tmcloud@avenidas.org) for details and location.

**Nov 10**  
**Legacy Podcast Discussion Group**  
2-3 pm, on Wednesdays, starting 11/10. RSVP required. Email [rsvp@seniorplanetavenidas.org](mailto:rsvp@seniorplanetavenidas.org). Free.

**Book Club: Becoming by Michelle Obama**  
2:30-4pm, Avenidas@450Bryant. Space is limited. RSVP required. Email [register@avenidas.org](mailto:register@avenidas.org). Free.

**Nov 11**  
**Info Session: ClearCaptions Advanced Telephone Captioning**  
11am-12pm via Zoom. RSVP for log on info to [register@avenidas.org](mailto:register@avenidas.org). Free.

**Bilingual webinar: Medicare Updates for 2022**  
1-2pm via Zoom. Presented in English and Mandarin. RSVP for log on info to [ACCC@avenidas.org](mailto:ACCC@avenidas.org). Free.

**Song Appreciation Group "Favorite Breakup Song,"**  
4-5pm via Zoom. Email [tkingen@avenidas.org](mailto:tkingen@avenidas.org) for more info and to register. Free.

**Nov 12**  
**Verizon Tech Talks**  
12-1pm, on Fridays. RSVP required. For more information or to register click [www.seniorplanet.org/tech-tutoring](http://www.seniorplanet.org/tech-tutoring). Free.

**Nov 15**  
**Play Reading Club**  
10:30am-12pm via Zoom. Email [tmcloud@avenidas.org](mailto:tmcloud@avenidas.org) for more info or to join.

**Nov 16**  
**Wonder Women Lesbian Social Group via Zoom**  
7-8m via Zoom. Email [jenn@seniorshowerproject.com](mailto:jenn@seniorshowerproject.com) for info and to register. Free.

**Nov 17**  
**Town Hall with Dr. Karen Goldsen presented by the Santa Clara County Office of LGBTQ+ Affairs**  
5-6:30pm via Zoom. Register at <https://bit.ly/LGBTQOlderAdultSCC>. Free

**Nov 18**  
**Avenidas Village Coffee Chat**  
10am via Zoom. Email [dgreenblat@avenidas.org](mailto:dgreenblat@avenidas.org) to register. Free.

**Bilingual webinar: Puzzling Symptoms: Is it Cancer?**  
1:30-2:30pm via Zoom. Presented in English and Mandarin. RSVP for log on info to [ACCC@avenidas.org](mailto:ACCC@avenidas.org). Free.

**Tinnitus Support Group**  
5:30-7:30pm via Zoom. RSVP for log on info to [register@avenidas.org](mailto:register@avenidas.org). Free.

**Nov 19**  
**Flashback Friday Literature Reading Club**  
10:30am-12pm via Zoom. Email [tmcloud@avenidas.org](mailto:tmcloud@avenidas.org) for more info or to join.

**Nov 22**  
**Go for a Ride Day!**  
Get in your car, bike, segway, unicycle, kayak, horse, or your tractor and go for a spin!

**Nov 23**  
**History as Biography Club**  
10:30am-12pm via Zoom. Email [tmcloud@avenidas.org](mailto:tmcloud@avenidas.org) for more info or to join.

**Nov 24**  
**Mindful Engagement Podcast Discussion Group via Zoom**  
10-11am, on Wednesdays. RSVP required. For info, email [rsvp@seniorplanetavenidas.org](mailto:rsvp@seniorplanetavenidas.org). Free.

**Nov 25**  
**Happy Thanksgiving!**  
Avenidas closed.

**Nov 26**  
**Happy Shopping!**  
Avenidas closed.

**Nov 29**  
**Constitutional Law class begins**  
11/29 thru 12/27, 11am-12pm, via Zoom. \$35/\$50. Call 650-289-5400 to register.

**Nov 30**  
**Giving Tuesday.**  
Apple Tech Talks, 1:15-3:30pm, on Tuesdays. RSVP required. Email [rsvp@seniorplanetavenidas.org](mailto:rsvp@seniorplanetavenidas.org). Free.

# PALO ALTO WEEKLY OPEN HOMES

## ATHERTON

<b>327 Stockbridge Avenue</b>	<b>\$12,988,000</b>
Sun 1:30-4:30	5BD/8BA
DeLeon Realty	650-900-7000
<b>6 Knoll Vista</b>	<b>\$9,950,000</b>
Sat/Sun 12:00-5:00	7BD/7.5BA
Compass	650-888-2389

## LOS ALTOS HILLS

<b>11665 Dawson Drive</b>	<b>\$4,488,000</b>
Sat 1:30-4:30	4BD/3.5BA
DeLeon Realty	650-900-7000

## MENLO PARK

<b>1360 Cloud Avenue</b>	<b>\$3,100,000</b>
Sat 1:30-4:30	4BD/3BA
DeLeon Realty	650-669-8088
<b>410 8th Avenue</b>	<b>\$1,825,000</b>
Sat/Sun 1:30-4:30	5BD/3.5BA
DeLeon Realty	650-669-8088

## PALO ALTO

<b>1187 Lincoln Avenue</b>	<b>\$3,995,000</b>
Sun 2:00-4:00	3BD/2BA
The Dreyfus Group, Golden Gate	
Sotheby's International Realty	650-485-3476

<b>156 Lowell Avenue</b>	<b>\$5,350,000</b>
Sun 2:00-3:30	4BD/3.5BA
Compass	650-400-8424

<b>1117 Hamilton Avenue</b>	<b>\$6,588,000</b>
Sun 1:30-4:30	5BD/5BA
DeLeon Realty	650-459-3888

<b>2303 Cowper Street</b>	<b>\$6,995,000</b>
Sun 2:00-4:00	5BD/6BA
The Dreyfus Group, Golden Gate	
Sotheby's International Realty	650-485-3476

<b>4158 Orchard Court</b>	<b>\$4,934,650</b>
Sun 1:00-3:00	5BD/7BA
The Dreyfus Group, Golden Gate	
Sotheby's International Realty	650-485-3476

## SAN MATEO

<b>3341 La Selva Street C (T)</b>	<b>\$699,500</b>
Sat/Sun 1:30-4:30	3BD/2BA
JLee Realty	650-857-1000

Legend: Condo (C), Townhome (T).

Agents: submit open homes at [PaloAltoOnline.com/real\\_estate](http://PaloAltoOnline.com/real_estate)



Sign up today for the only food newsletter on the Peninsula at [PaloAltoOnline.com/express](http://PaloAltoOnline.com/express)



## Your Realtor & You

### Silicon Valley REALTORS® Congratulate 2021-2022 FAREPA SV Leadership

The Silicon Valley Association of REALTORS® (SILVAR) and members of the real estate industry and public officials congratulated the Filipino American Real Estate Professional Association Silicon Valley (FAREPA SV) at the installation of the association's 2021-2022 leadership team on Oct. 21 at the Sonesta San Jose Hotel in Milpitas. The installation was FAREPA's first live event since the pandemic.

SILVAR President Joanne Fraser administered the oath of office to 2021-2022 FAREPA SV President Mark Taylan and officers. Taylan is a mortgage advisor with Direct Mortgage Funding. Joining Taylan are officers Frank Cancilla (eXp Realty of California, Inc.), president-elect; Anne Orozco-Ramirez (Realty World Dominion), vice president; LJ Grossweiler, (Patelco Credit Union), secretary; Dorotea Tuzon (State Farm Insurance), treasurer; and Cheryl (CJ) Javier (CBC Realty), immediate past president.

Doug Goss, president of the Santa Clara County Association of REALTORS®, installed 2021-2022 board directors Anna Truong Lopez (Wells Fargo Bank), Dan Ramas (Keller Williams Silicon City), Dexter Lat (Realty World One Alliance), Divina Pareno (WFG National Title Insurance), Tigran Bakchagyan (Keller Williams Silicon City), and Robert Balina (Synergize Realty).

In his message to members and guests, Taylan, who was re-appointed president of FAREPA, said the pandemic was a challenge, but FAREPA SV was able to manage and

even thrive due to the commitment of its leadership team. They were able to serve their membership with virtual meetings and events, like the first-time homebuyer workshop and webinars on reverse mortgage and investing in the Philippines. FAREPA SV has also started a cooking channel on YouTube, where members and guests cook favorite Filipino dishes

"My hope is for our board to continue to be a unified voice through education, networking, partnership, and to leave a foundation for future boards to thrive," said Taylan.

Congratulating Taylan and the leadership team, Fraser recalled her experience with members during the association's 2019 trade mission to the Philippines. "I had a wonderful time and enjoyed being with the group. SILVAR and FAREPA SV have had a longtime friendship. We hope to continue our partnership with you for many years to come," said Fraser.

FAREPA was formed in 2002. The association's mission is to "promote the interests of Filipino American real estate professionals, to elevate the level of professionalism with the global community through education, networking and partnership and to create a united voice within the real estate industry."

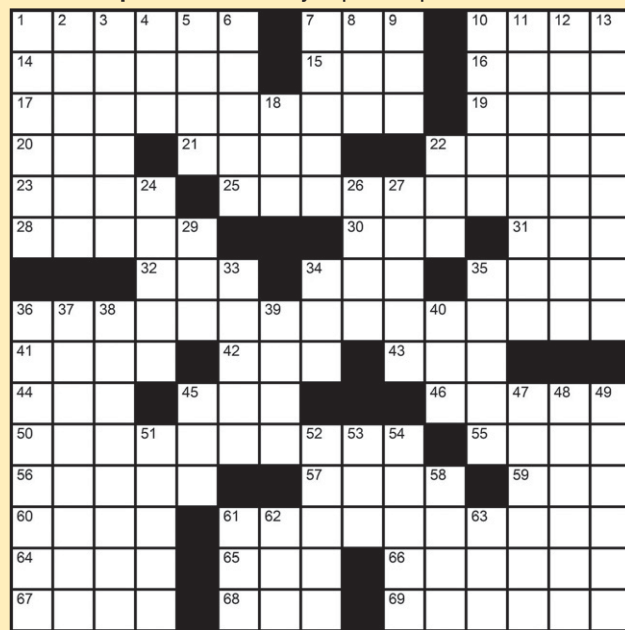
\*\*\*

Information provided in this column is presented by the Silicon Valley Association of REALTORS®. Send questions to Rose Meily at [rmeily@silvar.org](mailto:rmeily@silvar.org).

### Across

- Traffic issues
- Partner of the "five W's"
- Former host of "The Tonight Show" Jack
- Part of AOC
- Moses Malone's league, once
- Nearly 5,000 square yards
- Role in an Oregon capital production of "The Odd Couple"?
- Ball-\_\_\_ hammer
- The rite words at the rite time?
- Kunis who voices Meg Griffin
- English makeup YouTuber-turned-actress Burr
- They may be put on
- Brady in charge of every round piece of sporting equipment?
- Escape the egg
- "Back to main menu" key
- Regret
- "Certainment!"
- Early August sign
- "J'adore" perfumier
- Footwear merch for "Wuthering Heights" fans?
- "Sometimes you feel like \_\_\_ ..."
- Nutri-Grain grain
- Thanksgiving day, on a sched.
- Denver summer hrs.
- College, slangily, abroad
- Shoestring tip
- Find lead singer Day at the right Time?
- Prefix with decimal
- FDR biographer Joseph
- Quechua speaker
- Diesel that isn't measured by the gallon
- Bert who sang "If I Only Had the Nerve"
- 20th U.S. president picking a side in the "war of the currents"?
- "\_\_\_ Blue Moon" (Marie Osmond song)
- Sushi fish
- "Annie Get Your Gun" protagonist
- Mountain \_\_\_ (some Taco Bell orders)
- Authority in a Twitch chat

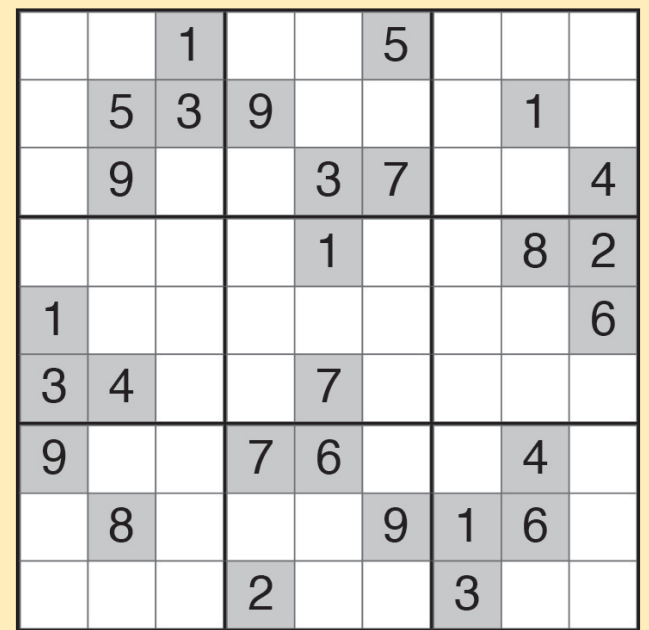
### "Cat-astrophe" — when they're paired up. Matt Jones



Answers on page 6.

- ### Down
- President Bartlet on "The West Wing"
  - French-Canadian region
  - Jeppson's \_\_\_ (Chicago-based wormwood liqueur)
  - Benefit from
  - Liqueur producer James, whose drink is used in a "cup" cocktail popular during Wimbledon
  - Actress Vergara
  - Permissible, in Islam
  - "Help me, \_\_\_-Wan Kenobi. You're my only hope"
  - Lose hair, in a way
  - Pontifical
  - Without a middle, geometrically

### This week's SUDOKU



Answers on page 6.

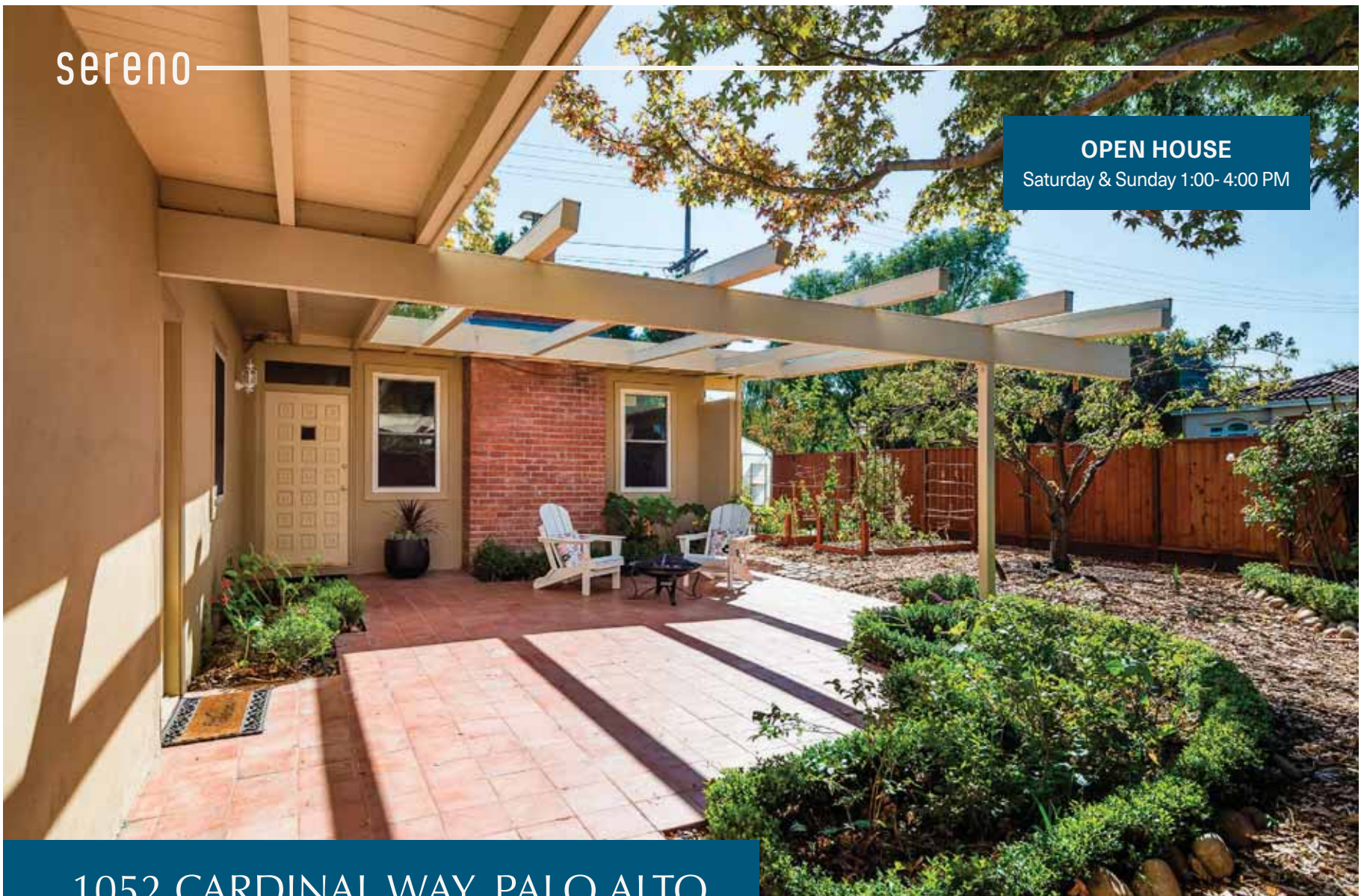
[www.sudoku.name](http://www.sudoku.name)

- Concerned query
- People changing their branding, say
- "Oh, bloody \_\_\_!"
- "No Scrubs" group
- Rapper Travis who had a signature McDonald's meal
- Dog food ingredient, maybe
- "\_\_\_ Place to Land" (Janae Marks book)
- "What the \_\_\_?"
- Prefix meaning "image"
- On fire
- Bakery need
- Side at some delis
- Cartilaginous layer between vertebrae and disks
- Place to see cars indoors
- Bear's den
- "Grease" band \_\_\_ Na Na
- Play caller
- Bottom of a parking garage, perhaps
- Voted off the island?
- Old Radio Shack home computers
- Pamplona participants
- Unbending
- Words before tie, bind, or knot
- Atlantic food fish
- Remotely
- Three Gorges, for one
- Comedian Margaret
- Barinholtz announced to work on the Mel Brooks series "History of the World, Part II"

©2021 Matt Jones

sereno

**OPEN HOUSE**  
Saturday & Sunday 1:00- 4:00 PM



**1052 CARDINAL WAY, PALO ALTO**

**MAGICAL EDIBLE GARDENS SURROUND THIS BEAUTIFUL MID-CENTURY MODERN HOME.**

3 Bedrooms | 2 Bathrooms | 1,240 SF Home | 7,528 SF Lot

This pristine Mid-Century Modern home is nestled in a quiet neighborhood surrounded by magical edible landscaping including, apple, pear, macadamia nut, avocado, pineapple guava & Medlar trees. Inviting courtyard with a tile patio and gardens welcomes you. Extensively remodelled throughout. High shiplap ceilings with natural knotty pine wood. Beautiful kitchen with quartz counters, cherry color cabinets, tile backsplash & gas cooktop, overlooks the backyard and gorgeous brazilian wood deck & trailing kiwi vine. Gleaming floors throughout. Upgraded high-efficiency radiant heat system.

**OFFERED FOR \$2,598,000**



**KATHLEEN PASIN**  
REAL ESTATE

**650.450.1912** | [kathleen@kathleenpasin.com](mailto:kathleen@kathleenpasin.com)  
[KathleenPasin.com](http://KathleenPasin.com) | DRE 01396779

This information was supplied by third party sources. Sales Associate believes this information is correct but has not verified this information and assumes no legal responsibility for its accuracy. Buyer should verify accuracy and investigate to Buyer's own satisfaction.